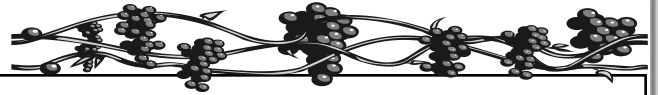


PHILABUNDANCE



The Grapevine

You can also view the Grapevine by visiting www.philabundance.org

May 15, 2012

Weekly Specials

ITEM NUMBER	PRODUCT DESCRIPTION	PACK SIZE	PRICE	COST PER UNIT
P-437	STUFFING MIX, CHICKEN	12/6oz	\$10.25	\$0.85
P-824	CHICKEN SAUSAGE PATTY/FULLY	10/2lb	\$33.25	\$3.33
P-038	VEGETABLES, MIXED	24/15oz	\$15.25	\$0.64

Free Items

ITEM NUMBER	PRODUCT DESCRIPTION	PACK SIZE
D-3688	Baby Food Peas	12/4 oz.
D-4388	Yogurt & Ice Assorted Flavors	12/5 oz.

INVENTORY BLOWOUT

ITEM NUMBER	PRODUCT DESCRIPTION	PACK SIZE	PRICE
P-813	Milk, Powdered	Each case has 12 boxes, Each box has 5 envelopes	\$25.00

Each box contains 5, 1 quart envelopes of powdered milk.
That's \$2.08 per box or \$0.42 per quart.

HOLIDAY SCHEDULE:

PHILABUNDANCE WILL BE CLOSED ON MONDAY, May 28th

Monday, May 28th

- The Order-Taking Line will be closed.
- There will be no deliveries, no pickups, no produce.
- If you normally receive a produce delivery on Monday and would like to come to the produce hub on Tuesday at our Galloway warehouse to pick up produce please call Agency Community Relations at 215-339-0900 extension 2055.



Attention Pennsylvania Agencies Only: The Chicken Leg Quarters came to us from the Pennsylvania USDA to offer to our Pennsylvania agencies at no cost. To our New Jersey agencies we are sorry that you cannot take advantage of this item because it is restricted to agencies located in Pennsylvania only.

Menu - 05/15/2012

Legend

- ♥ Healthy Choice Foods - Items that are low in unhealthy fats and sodium
 - ☺ Covered by State Food Grant for Bucks, Chester and Montgomery Counties
 - (U) Kosher
 - (D) Kosher/Dairy
 - (P) Kosher/Pareve
 - ▲ Covered by State Food Grant for Philadelphia County
- BARGAIN BUYS ARE IN CAPITAL LETTERS

Item No.	Description	Pack Size	Storage	Case Weight (lbs)	Price per Pound	Price per Case
Baby Food						
☺ (U) ▲ D-3688	Baby Food Peas	12 / 4 oz.	DRY	6	\$0.00	\$0.00
☺ P-584	FORMULA REG, GOOD START, POWDER(0-12 MO)	6/12oz.	DRY	6		\$60.00
☺ P-585	FORMULA, SOY, GOOD START, POWDER(0-12 MO)	6/12oz.	DRY	6		\$60.00
Baking Flour, Mixes, Supplies						
D-3479	Cookie, Pie, and Cake Mix, Assort., Household Size	1/ 15 lb	DRY	15	\$0.18	\$2.70
Breakfast Foods						
☺ ▲ D-3202	Cereal Special K Original (Kelloggs)	12 / 18 oz.	DRY	19	\$0.18	\$3.42
☺ (P) P-549	CEREAL, CORN FLAKES	12/8oz.	DRY	9		\$12.00
☺ ▲ D-3482	Cereal, Hot & Cold, Assort., Household Size	1/ 10 lb	DRY	10	\$0.18	\$1.80
☺ (U) P-392	CEREAL, HOT, QUICK OATS	12 / 18 oz	DRY	15		\$13.95
☺ (U) P-769	GOLDEN MIX	12/ 8 oz.	DRY	9		\$12.00
☺ (U) P-405	GRITS, QUICK (RALSTON)	12/24 oz	DRY	21		\$15.55
☺ (P) P-770	HONEY RINGS	12/ 8 oz.	DRY	9		\$12.00
☺ (P) P-768	TOASTED RINGS (NOONIES)	12/ 8oz.	DRY	9		\$12.00
Canned Fruits and Vegetables						
☺ P-529	CANNED, PEACHES	24/15oz.	DRY	27		\$21.25
☺ P-006	FRUIT, APPLESAUCE	24/15 oz	DRY	25		\$15.29
☺ ▲ D-3189	Fruit, Asst., Household size 7 to 28 oz	1/30 lbs	DRY	30	\$0.18	\$5.40
☺ P-438	FRUIT, CRANBERRY SAUCE, CANNED	24/16 OZ	DRY	24		\$16.55
☺ (P) ▲ P-044	FRUIT, PEARS	24/15 oz.	DRY	30		\$21.50
☺ (U) P-815	FRUIT, PLUMS PURPLE WHOLE	12/30 oz	DRY	26		\$14.25
☺ P-463	ORANGES, MANDARIN	24/11oz.	DRY	20		\$15.93
☺ P-530	PEAS, CANNED	24/15oz.	DRY	24		\$16.22
☺ (U) P-076	SWEET POTATOES	24/15 oz.	DRY	24		\$17.75
☺ ▲ D-3306	Veg, Non-Green Asst,Household Size 8 -16 oz.	1/30 lbs	DRY	30	\$0.18	\$5.40
☺ P-015	VEGETABLES, CANNED, CORN	24/15 oz.	DRY	25		\$15.35
☺ P-016	VEGETABLES, CANNED, GREEN BEANS	24/15 oz.	DRY	25		\$14.96
☺ P-038	VEGETABLES, MIXED	24/15 oz.	DRY	25		\$15.25
☺ (U) ▲ P-058	VEGETABLES, SLICED, CARROTS	24/14.5 oz.	DRY	25		\$17.95
☺ P-060	VEGETABLES, SLICED, POTATOES	24/15 oz.	DRY	25		\$15.75

PLEASE NOTE: PURCHASED ITEMS (P) ARE SOLD BY THE CASE AND NOT BY THE POUND

Item No.	Description	Pack Size	Storage	Case		
				Weight (lbs)	Price per Pound	Price per Case
Canned/Shelf Stable Prepared Foods						
☺	P-232 MEATBALLS, TOMATO SAUCE	12 / 14.5 oz.	DRY	11		\$21.99
☺	P-013 PASTA, BEEF RAVIOLI	24/15 oz.	DRY	25		\$18.75
☺	▲ D-3268 Pasta, Canned, Asst., Household Size 8 to 16oz	1/30 lbs	DRY	30	\$0.18	\$5.40
☺	▲ D-2422 Pasta, Mini Ravioli	24 / 15 oz.	DRY	26	\$0.18	\$4.68
☺	P-062 PASTA, SPAGHETTI RINGS	24/15 oz.	DRY	25		\$16.25
☺	▲ D-4401 Pasta,Beef Ravioli (Chef Boyardee)	24 / 15 oz.	DRY	25	\$0.18	\$4.50
☺	P-052 PORK 'N' BEANS	24/16 oz.	DRY	28		\$16.45
☺	▲ D-3556 Ravioli Beef	24 / 15 oz.	DRY	27	\$0.18	\$4.86
☺	P-641 STROGANOFF SKILLET DINNER	12/6.5 oz	DRY	7		\$10.45
Canned/Shelf Stable Meat and Fish						
☺	P-057 BEEF, SLICED IN GRAVY	12/12 oz.	DRY	11		\$24.95
☺	P-521 CHICKEN & DUMPLING	12/24oz.	DRY	19		\$21.75
☺	P-582 TUNA, CHUNK LITE	48/5oz.	DRY	19		\$35.50
Cookie, Cracker, Snack, Cake						
	D-2477 Candy, Assorted	1 / 10lb.	DRY	10	\$0.18	\$1.80
	D-4422 Cookies Oreo	30 / 2 oz.	DRY	5	\$0.18	\$0.90
	D-4421 Crackers Graham Cinnamons	12 / 14.4	DRY	12	\$0.18	\$2.16
☺	▲ D-4426 Crackers Ritz	4 / 2lb 5.7 oz.	DRY	17	\$0.18	\$3.06
☺	▲ D-4423 Crackers Wheat Thins	4 / 2 lb.	DRY	10	\$0.18	\$1.80
☺	▲ D-4425 Crackers Wheat Thins	4 / 20 oz.	DRY	12	\$0.18	\$2.16
☺	▲ D-4253 Crackers,Asst. Household Size	1/15lb	DRY	15	\$0.18	\$2.70
	D-4424 Snacks Munchables Prezel Rounds	6 / 11.5 oz.	DRY	6	\$0.18	\$1.08
Dried Beans and Grains						
☺	▲ P-716 CRANBERRY BEANS	12/2lb.	DRY	25		\$9.76
☺	▲ P-717 PINTO BEANS	12/2lb.	DRY	26		\$10.20
☺	▲ P-814 RICE & PINTO BEAN BOX, (6/2 lb RICE & 6/2lb BEAN)	12/2lb.	DRY	25		\$10.29
Fruit and Vegetable Juices						
☺ (U)	P-822 100% APPLE JUICE	40/ 6.75 oz	DRY	20		\$12.90
☺ (U)	P-823 100% BERRY BLEND JUICE	40/ 6.75 oz	DRY	20		\$12.90
☺ (U)	P-821 100% ORANGE JUICE	40/ 6.75 oz	DRY	20		\$12.90
☺	P-592 APPLE JUICE, 100%	12/33.8 oz.	DRY	28		\$16.25
☺	▲ D-4418 Juice Grapefruit	12/ 33.8 oz.	DRY	29	\$0.18	\$5.22
	D-4302 Juice, Asst.	1/20lb.	DRY	20	\$0.18	\$3.60
Dry Milk and Milk Modifiers						
☺	P-431 MILK, CHOCOLATE, SHELF STABLE	27/8oz.	DRY	14		\$12.15
☺	P-813 MILK, POWDERED	12/16 oz	DRY	16		\$25.00
☺ (U)	P-430 MILK, WHITE, SHELF STABLE	27/8oz.	DRY	14		\$12.15
☺	P-672 MILK,STRAWBERRY 2%, SHELF STABLE	27/8 oz.	DRY	14		\$12.15

PLEASE NOTE: PURCHASED ITEMS (P) ARE SOLD BY THE CASE AND NOT BY THE POUND

Item No.	Description	Pack Size	Storage	Case Weight (lbs)	Price per Pound	Price per Case
Mixed and Misc.						
P-710	SAUCE, SLOPPY JOE	24 / 15 oz.	DRY	27		\$19.95
☺ P-063	SAUCE, SPAGHETTI MEAT FLAVOR	12/26 oz.	DRY	30		\$16.05
☺ P-588	SAUCE, SPAGHETTI MEAT FLAVOR	12/26.5oz.	DRY	23		\$13.25
Pasta, Rice and Dry Mixes						
☺ ▲ D-4252	Dry Pasta, Stuffing, Asst. Household Size	1/30lb	DRY	30	\$0.18	\$5.40
☺ (U) P-554	EGG NOODLES	12/12oz	DRY	10		\$8.75
☺ P-561	INSTANT POTATO FLAKES	12/13.3oz.	DRY	12		\$20.59
☺ P-079	MACARONI & CHEESE	24/7.25 oz.	DRY	14		\$12.50
☺ P-509	PASTA ZITI	20/16oz.	DRY	21		\$10.00
☺ P-409	PASTA, ELBOW	20/16oz.	DRY	21		\$13.75
☺ ▲ P-774	PASTA, PENNE	10/ 2 lbs	DRY	21		\$8.10
☺ P-437	STUFFING MIX, CHICKEN	12/6oz.	DRY	7		\$10.25
Proteins, Misc Shelf Stable						
☺ (U) P-074	BEANS, VEGETARIAN	24/16 oz.	DRY	25		\$15.60
Beverages (non-fruit)						
P-832	COFFEE, REGULAR	24/12 oz	DRY	19		\$71.00
D-4271	Water, Spring (Wawa)	24/24oz	DRY	41	\$0.18	\$7.38
Soup - Canned and dry						
☺ ▲ D-3188	Soup, Asst., Household size 10 to 32 oz	1/30 lbs	DRY	30	\$0.18	\$5.40
Household Cleaning Supplies						
P-819	DISH LIQUID	12/20 oz	DRY	17		\$12.95
Paper products - household						
P-025	BOWLS, FOAM	1000/ 5 oz	DRY	10		\$20.95
P-026	CUPS, FOAM	1000/8oz.	DRY	10		\$18.85
P-833	FOIL, ALUMINUM	18" x 500'	DRY	8		\$22.32
P-047	FORKS, PLASTIC	1/1000 ct	DRY	5		\$7.65
P-048	KNIVES, PLASTIC	1/1000 ct	DRY	5		\$7.65
P-508	LUNCH PAPER NAPKIN	12/500	DRY	28		\$30.50
P-020	PLATES, COMPARTMENT	1/500 ct	DRY	10		\$18.18
P-049	SPOONS, PLASTIC	1/1000 ct	DRY	5		\$7.65
P-050	WRAP, PLASTIC	18"x 2000'	DRY	10		\$15.46
General Merchandise						
D-4362	Hand Sanitizing Wipes	6 / 220 Wipes	DRY	10	\$0.18	\$1.80
Fresh Bakery						
☺ ▲ D-4087	Bread, Sliced, Wheat, Asst., Household Size	1/12ct	REF	15	\$0.00	\$0.00
☺ ▲ D-4086	Bread, Sliced, White, Asst., Household Size	1/12ct	REF	15	\$0.00	\$0.00
☺ ▲ D-4084	Rolls, Hamburger, Assorted	16/8ct	REF	13	\$0.00	\$0.00
☺ ▲ D-4085	Rolls, Hot Dog, Assorted	16/8ct	REF	13	\$0.00	\$0.00
Dairy						
☺ P-434	CHEESE, SINGLES, AMERICAN (ACCENT)	48/10oz.	REF	32		\$42.50
☺ P-416	EGGS, MEDIUM	15/1 DOZ	REF	21		\$16.35
P-435	MARGARINE (ADMIRATION)	30/ 1 LB (SOLIDS)	REF	30		\$24.25
Bkd Gds, Potato Prods, Brkfst Fd						
☺ P-828	FRENCH TOAST STICKS, FROZEN	12/ 12.7 oz.	FRO	11		\$29.95
☺ (D) ▲ D-4394	Waffles, Blueberry Flavored, Dunkin Donuts	192ct	FRO	14	\$0.18	\$2.52
☺ P-827	WAFFLES, FROZEN	12/ 11 oz.	FRO	12		\$29.95

PLEASE NOTE: PURCHASED ITEMS (P) ARE SOLD BY THE CASE AND NOT BY THE POUND

Item No.	Description	Pack Size	Storage	Case		
				Weight (lbs)	Price per Pound	Price per Case
Desserts and Toppings						
D-4317	Sorbert Pear Ginger	2 / 1 Gal.	FRO	14	\$0.18	\$2.52
D-4315	Sorbet Chocolate Caramel	2 / 1 gal.	FRO	14	\$0.18	\$2.52
D-4316	Sorbet Chocolate Caramel	8 / 1 Pint.	FRO	7	\$0.18	\$1.26
D-4318	Sorbet Mojito	2 / 1 gal.	FRO	14	\$0.18	\$2.52
D-4388	Yogurt And Ice Assorted Flavors	12 / 5 oz.	FRO	4	\$0.00	\$0.00
Frozen Prepared Foods						
☺ ▲ D-4428	Meal Chicken Pasta Pomodoro	8 / 10 oz.	FRO	6	\$0.18	\$1.08
☺ ▲ D-4429	Meal Mac & Cheese	12 / 7.5 oz.	FRO	7	\$0.18	\$1.26
☺ ▲ D-4363	Pasta Mac & Cheese	6 / 5 lb.	FRO	32	\$0.18	\$5.76
☺ ▲ D-4414	Peanut Butter & Strawberry Uncrustables	72 / 5. oz.	FRO	23	\$0.18	\$4.14
☺ ▲ D-4389	Peanutbutter & Honey Uncrustables	72 / 2.8 oz.	FRO	14	\$0.18	\$2.52
Frozen Unprepared Meat / Seafood / Poultry						
☺ P-702	GROUND BEEF (80/20)	24/1 lb	FRO	25		\$49.99
☺ P-593	GROUND CHICKEN (LAKE)	12/1lb.	FRO	13		\$12.00
☺ ▲ D-4203	Poultry Chicken Leg Quarters (USDA)	4 / 10 lb.	FRO	41	\$0.00	\$0.00
Frozen Prepared Meat / Seafood / Poultry						
☺ P-820	CHICKEN HOT DOGS	24/ 1-lb pkgs	FRO	25		\$28.22
☺ P-824	CHICKEN SAUSAGE PATTY/FULLY COOKED	10/ 2 lb.	FRO	21		\$33.25
☺ P-690	CRISPY CHICKEN NUGGETS	10/ 2lbs	FRO	22		\$32.49
☺ ▲ P-689	CRISPY CHICKEN PATTIES	10/ 2lbs	FRO	24		\$32.49
Philabundance Meal Solutions™						
☺ P-358	ENTREE, RIGATONI W/ MEAT SAUCE	48 portions	FRO	18		\$36.60
☺ P-826	MIXED VEGETABLES	48 portions	FRO	8		\$26.40

Mixed Vegetable Casserole

Ingredients

- 2 (15 ounce) cans mixed vegetables, drained
- 1 small onion, diced
- 1 (10.75 ounce) can condensed cream of chicken soup
- 1 cup mayonnaise
- 1 cup shredded white Cheddar cheese
- 36 buttery round crackers, crushed

Directions

1. Preheat oven to 350 degrees F (175 degrees C).
2. In a medium bowl combine the mixed vegetables, onion, soup, mayonnaise and cheese. Mix well and spread mixture into a 9x13 inch baking dish. Top with the cracker crumbs.
3. Bake about 30 minutes, or until browned and bubbly.





Agency Food Distribution Guidelines

Product	Product Consumed By	Non-Acceptable Conditions
Dairy (product date is usually a sell by date)		Damaged packaging, odd taste, odor, mold
Fresh Milk	7 days after Product Date	
Yogurt / Cream	7 days after Product Date	
Butter	Up to 30 days after Product Date	
Cream Cheese	14 days after Product Date	
Cheese	Up to 30 days after Product Date	
Eggs	Up to 28 days after Product Date	
Margarine	Up to 30 days after Product Date	
Frozen butter, cream cheese, hard cheese	Up to 180 days after Product Date or Date Frozen	
Perishable Beverages, OJ	7 days after Product Date	
Cans and Jars (product date is usually a use by date)		Damaged Seals, bulging, severe dents, popped safety seal
Soup	Up to 365 days after Product Date	
Condiments	Up to 365 days after Product Date	
Vegetables	Up to 365 days after Product Date	
Fish	Up to 365 days after Product Date	
Meat	Up to 365 days after Product Date	
Prepackaged Foods		Damaged packaging, stale, mold, insects
Cereal	Up to 180 days after Product Date	
Crackers	Up to 180 days after Product Date	
Dried Pasta	Up to 180 days after Product Date	
Dried Beans	Up to 180 days after Product Date	
Rice	Up to 180 days after Product Date	
Baking Supplies		Damaged packaging, stale, mold, insects
Bread, Muffin Mixes	Up to 365 days after Product Date	
Cake, Brownie Mixes	Up to 365 days after Product Date	
Cookie, Desert Mix	Up to 365 days after Product Date	
Piecrust	Up to 365 days after Product Date	
Pancake, Rolls, Biscuit Mix	Up to 365 days after Product Date	
Frosting ready to spread	Up to 365 days after Product Date	
Frozen Product		Defrosted or damaged, product, freezer burn, ice crystals
Meat	Up to 365 days after Product Date	
Seafood	Up to 365 days after Product Date	
Poultry	Up to 365 days after Product Date	
Vegetables	Up to 365 days after Product Date	
Ice Cream / Retail Pack	Up to 365 days after Product Date	
Baby Food		Any product that has expired
Baby Food	Product Date	
Infant Formula	Product Date	
Baby Juice	Product Date	
Beverages		Damaged packaging, odd taste odor or mold
Nonperishable	Up to 365 days after Product Date	

For all of our agencies...

Are you interested in learning more about offering choice at your food pantry? Offering choice in your pantry means letting clients choose some or all of the food that they receive. There are lots of different ways to offer choice that can be tailored to the way your pantry currently operates.

Offering choice....

- cuts down on waste. Clients only choose what they will use. Some clients have dietary restrictions or preferences just like anyone else. Or maybe they already have a certain item at home and would prefer to get something else.
- preserves clients' dignity. Allowing clients to choose what they receive is a more respectful way to assist them.
- can increase the amount of food you distribute to the community. When you don't have to pre-pack a bag anymore, there is no need to worry about having the same number of every item you're offering. This gives you the flexibility to accept odd numbered donations or donations of more unusual items.
- maximizes volunteer and client one-on-one time. Instead of spending time packing bags, volunteers are free to interact with the pantry's clients and really get to know them.
- makes it easier to supplement a client's needs rather than provide complete meals. No need to worry about packing the "perfect" bag; clients know what's best for their family and can augment the other resources that they have access to.

"We've been offering choice for nearly 10 years, and we find it's easier than pre-bagging. Clients are better served and we waste less food."

-Tom Allebach, Former Executive Director, Manna on Main Street

If you'd like to know more about offering choice, we'd be happy to come and visit with you. Call Jessi Averill at 215-339-0900 ext. 2054 or email her at javerill@philabundance.org.



Congratulations

2011 Star Online Reporting Food Cupboards

These Agencies Reported for all 52 weeks in 2011!

**Camden Housing Authority
Catholic Social Services of Montco
Chelten Baptist Church
The Church of Christian Compassion
Cluster Outreach Center
Feast of Justice
Grace Lutheran Church
Helping Others Resources
Holy Redeemer Food Cupboard
Jesus Holy Temple Cupboard
Lord's Pantry of Downingtown
New Pond Baptist Church
No Longer Bound
Northlight Community Center
Pennridge Fish
Quakertown Food Pantry
Sisterhood, Inc
Solomon Temple
St. John's Lord's Pantry
St. Peter's Food Cupboard
West Chester Food Cupboard**

Each Agency will be receiving an Award Certificate in the Mail.

Want to be a Star Reporting Food Cupboard?

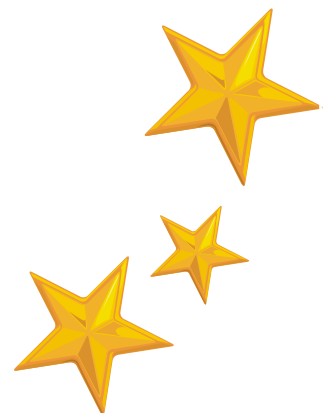
- * We will be publishing a list of Star Reporting Agencies every 6 months.
- * Our List for the first half of 2012 will be published in August.
- * Food Cupboards that do not miss any reports for a full year will receive an award certificate in addition.

Need Help Getting Started with Online Reporting?

We'd be happy to help you get registered with the system and begin to report. We'd be happy to send you additional copies of the instructions or schedule an appointment to work with you one on one and show you the system

Remember—in order to qualify for Favored or Flag Agency status, you must report regularly!

For questions or to make an appointment to receive assistance with the system, call Melissa at 215-339-0900 x2058



2nd Annual
SHOES FOR LIFE

A Community Service Project

Teenshop, Inc.®

Social Service Agencies

Do you have clients who need gently worn and new shoes?
 Hundreds of shoes will be available for children, women and men in all sizes.



If your agency would like to send clients, please call 215-851-1843 by Monday, May 1st, to confirm your participation. Shoes will be distributed on a first come first serve basis. The number of shoes per family will be limited.

Saturday, May 19, 2012

11:00 AM to 2:00 PM

Berean Presbyterian Church

Broad and Diamond Streets

Philadelphia, PA



Teenshop, Inc. was founded on June 15, 1985.

Teenshop encourages 'girls with goals'® to become caring, courageous leaders and change agents in their communities and beyond. Three chapters are located in Philadelphia and one in Los Angeles, California.

www.teenshop.org 215-851-1843

Philabundance

AGENCY ORDER FORM TO BE FAXED TO: 215-739-3330

Instructions on faxing your order into us:

Please print clearly and make sure all fields are filled in. **Fax your order to the number above no later than 3pm to guarantee your delivery or pick-up day.** We will fax this form back to you to confirm your order no later than 3 p.m. the following day.

Any questions please call 1-888-722-4732 or 215-739-7221. Remember to make extra blank copies of this form.

TO BE FILLED OUT BY THE AGENCY

AGENCY FAX NUMBER _____

PHILABUNDANCE AGENCY NO. _____

AGENCY NAME _____

CONTACT PERSON _____

PHONE NUMBER _____

DATE ORDERED _____

DELIVERY/PICKUP DATE _____

PREFERRED PICK UP TIME _____

ITEM #	DESCRIPTION OF PRODUCT	QUANTITY
1.	_____	_____
2.	_____	_____
3.	_____	_____
4.	_____	_____
5.	_____	_____
6.	_____	_____
7.	_____	_____
8.	_____	_____
9.	_____	_____
10.	_____	_____

Please make copies of this form to list additional items.

Any questions please call 1-888-722-4732 or 215-739-7221. This space may be used for additional comments:

TO BE FILLED OUT BY PHILABUNDANCE ORDER TAKERS

DELIVERY/PICKUP DATE _____

CONFIRMED PICKUP TIME _____
(Monday thru Friday 8:30 AM—12:30PM)

CONFIRMATION NUMBER _____

TOTAL _____ GRANT AMOUNT _____ BALANCE DUE _____

Philabundance
 302 W. Berks Street
 Philadelphia, PA 19122-2239
 Phone: (215) 339-0900
 Fax: (215) 739-3050
 www.philabundance.org

May Bargain Buys

For Orders Placed 5/1 through 5/31

- P-689 Chicken Patties**
- P-058 Sliced Carrots**
- P-044 Pears in light syrup**



...MAYE...



All items covered by the PH County State Food Grant are indicated with a "▲" on the Menu.

Order Line	215-739-7221 or toll free 1-888-722-4732
Order Taking	<p>Monday through Friday from 8:30 to 12:30 and 1:00 to 3:00</p> <ul style="list-style-type: none"> ✓ Pick up orders: Call two working days before pickup day; order changes accepted until noon, two working days before pickup. ✓ Delivery Order: Call by Noon on Thursday the week before Delivery. ✓ Lunch: There will be no orders taken during lunch time from 12:30 to 1:00
Order Pick Up	Monday through Friday 8:30 to 12:30
Delivery	<p>Scheduled days for zip code or county. Call Dispatch Line for Delivery Time: 215-339-0900 ext 1602</p>