



PHILABUNDANCE

Annual
REPORT

2017

We Strive

To Drive Hunger from Our
Communities Today and End
Hunger Forever.



TABLE OF CONTENTS

Note from the Executive Director and Chairman of the Board	4-5
2017 Impact.....	6-7
Food Rescue Efforts.....	8-9
Reaching Vulnerable Populations.....	10-11
PCKatering	12-13
New Website.....	14
Fare & Square.....	15
New Leadership	16
Financials	20-21
Donors.....	22-41

a note

FROM THE EXECUTIVE DIRECTOR & CHAIRMAN OF THE BOARD

In 2017, Alfred Lubrano, a highly-respected poverty writer for the Philadelphia Inquirer, penned a story titled: "Hunger in Philadelphia increases while declining nationwide." It is a sad commentary of the hunger crisis we face in our area, which is attributable to "Philadelphia's high poverty rate [26 percent]..." That is why our collective efforts to fight hunger are more important now than ever.

Looking back on 2017, we're very proud of the important work our team accomplished to move forward our mission to drive hunger from our communities today and end hunger forever.

We could not have made such an impact without the generosity of our donors, the energy of our staff, the awe-inspiring work of thousands of volunteers, the guidance of our dedicated Board of Directors and YOUR help.

The hunger crisis affects 1 in 8 people in the U.S. and, even worse, 1 in 5 in our area. While this is a daunting statistic, it strengthened our resolve to help feed as many people in need as we could. One way to do this was by getting back to our roots of food rescue.

In 1984, Pamela Rainey Lawler launched Philabundance by picking up perfectly good leftover food from restaurants and caterers and providing it to those in need. More than thirty years later, Philabundance has launched new and expanded efforts to rescue tens of millions of pounds of food that would have been landfilled due to overproduction, flaws in its appearance or mislabeling. These efforts include: expanding our gleaning opportunities; developing new partnerships; and using new technology, collectively leading to three quarters of the food we distributed in 2017 being healthy. Read more about our food rescue efforts on page X.

Another way to help decrease hunger is collaboration. 2017 marked the first full year of innovative partnerships with the Chester County Food Bank, the Bucks County Opportunity Council and the Pottstown Cluster of Religious Communities, which, collectively, led to an addition of a million pounds of food for our hungry neighbors, most of which was fresh produce. Philabundance delivered this food to a central location in each county and our partners managed distribution, which increased the pounds available in their counties and created efficiencies that allow us to do more in all of the counties we serve.

We also attained more efficiency by training others to assist, or even manage, programs that had previously been Philabundance-run. For instance, FFA AGENCY had hosted Fresh For All for X years, so our team

150

STAFF MEMBERS
CHAMPIONED
OUR MISSION
LAST YEAR

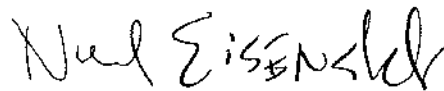
trained their staff and volunteers to take over this program, freeing up our limited staff to work on other programs, such as the MilitaryShare pilot. Learn more about expanded programming on page Z.

For Philabundance, 2017 was a year of productivity and achievement. Plans for 2018 include the expansion of our Philabundance Community Kitchen program, a partnership with SEPTA and the Broad Street Ministry to increase access to food for the homeless and advocacy efforts to help keep the food safety nets for the more than 700,000 in our area who need it.

Thank you all for your support.



Glenn Bergman
Executive Director



Noel Eisenstat
Chairman of the Board



Executive Director, Glenn Bergman sorts through bell peppers at the Philadelphia Wholesale Produce Market.

2017

AT A GLANCE

Total Distributed



25M
meals distributed in
the Delaware Valley

Fare & Square



175,417
people shopped
at Fare & Square

Drivers



15K
miles driven
per month

Fresh for All



1.9M
lbs of fresh, free
produce distributed at
9 locations in PA + NJ

Children's Programs



191K
lbs distributed to children
in our service area

Commodity Supplemental Food Program



4,471
SENIOR BOXES
distributed every month

Military Share

280
military families
served



Philabundance Community Kitchen



250K
meals produced
and distributed
to those in need

Staff



150
worked towards the mission
of driving hunger from our
communities today and
ending hunger forever

Volunteers



16K+
generous
people
volunteered
their time

Volunteer Programs



OVER \$1M saved allowing
more than **2 million meals**
to go back into feeding
the community!

sustainability

WASTE NOT, WANT NOT

Long before “sustainability” became a buzzword, in 1984, Pamela Rainey Lawler founded Philabundance on the concept of rescuing food slated for waste and distributing it to hungry people.

Since then, the issues of food waste and hunger have only worsened; the United States wastes an estimated 40% of the food it produces, while 1 in 8 Americans (and 1 in 5 Philadelphians) don't know where their next meal is coming from... or if they'll have one at all.

Mindful of this growing dysfunction in the nation's food system, and thanks to the generous support of the Claneil Foundation, Philabundance has hired a deputy director of sustainability and expanded our innovative food recovery efforts.

SUSTAINABILITY AT WORK IN 2017

- Philabundance commissioned a report from Harvard Law School Food Law and Policy Clinic to identify policy changes that would reduce food waste in Pennsylvania. Two main policy objectives that we believe will have the biggest impact on food insecurity and the creation of a better food system are:

- 1) A statewide food waste recycling law
- 2) The adoption of a clear date labeling system



- We also piloted a creative partnership with Lancaster-based farms to produce cheese under the label Abundantly Good, which is sold at local Di Bruno Brothers stores. A portion of the proceeds go back to the farmers to process excess milk into quality cheese for Philabundance clients. Over 2,000 pounds of amazing fresh cheese have been provided so far!
- In April, Philabundance was part of a citywide coalition to rescue 20,000 pounds of food from the NFL Draft in Philadelphia. This project raised awareness of food waste and recruited new support from local retailers and restaurants.
- We also engaged volunteers at an “urban gleaning” program at the Philadelphia Wholesale Produce Market, where we saved almost 1,000,000 pounds of produce that may not be perfect for a grocery store, but is still wholesome and tasty!

Eighty percent of all the food donated to Philabundance is perfect for consumption, but would have become waste thanks to overstocked shelves, confusing date labels, excess production from events or simply because it wasn't pretty enough to sell. “We're providing good nutritious food for our community and having a positive impact on the environment. It's a win, win!” said Kait Bowdler, Philabundance's Deputy Director of Sustainability.



“

“We’re providing good nutritious food for our community and having a positive impact on the environment. It’s a win, win!”

”

– Kait Bowdler
Deputy Director of Sustainability



reaching

VULNERABLE POPULATIONS

Demonstrating that innovation is a major element in our DNA, Philabundance rolled out new programs in 2017 to reach vulnerable populations and partnered with other non-profits to do this important work.

To address food insecurity in Bucks County, Philabundance partnered with Bucks County Opportunity Council, Rolling Harvest Food Rescue and St. Mary's Medical Center. Thanks to generous funding from United Way of Bucks County, the groups established Fresh Connect, two free farmers market-style produce distributions modeled on our Fresh For All program.

In its first six months, Fresh Connect helped more than 1,300 households at the Bristol campus of Bucks County Community College and at a rural location in Ottsville.



FreshConnect in Bucks County helps people in need with access to fresh fruits and vegetables.

3 ADDITIONAL PILOT PROGRAMS

BRINGING HEALTHY FOOD TO FAMILIES IN NEED

BackPack Program

BackPack was aimed at low-income students and their families. Partnering with The Food Trust and the Mayor's Office of Education, Philabundance distributed 145,000 pounds of food and produce to 3,500 students in elementary schools in Philadelphia, Delaware and Montgomery counties and a community site. This pilot program was possible thanks to the help of Chester County Food Bank, which assembled the BackPacks.

MilitaryShare Program

MilitaryShare is a partnership with the Pennsylvania National Guard Family Program. During the summer of 2017, Philabundance set up distributions in Philadelphia, Bucks and Montgomery counties, delivering more than 7,600 pounds of food to 280 military households. The food boxes contained fresh produce, dairy products and pantry items.

PantryBox Program

To reduce the gap in service to senior citizens who did not receive a government-supplied "senior box" Philabundance launched the PantryBox program. This pilot, made possible by a generous grant from the W. W. Smith Charitable Trust, allowed us to serve 625 senior citizens per month who would not have received needed food otherwise.

“

“We have found very clearly that our existing agency network is much stronger when we augment it with schools, military bases and social service agencies.”

”

– Sean Breslin
Manager of Member Relations

To continue our focus on providing healthy, fresh foods in 2017, Philabundance and Vetri Community Partnership teamed up to provide healthy recipes centered on the free produce clients receive at our Fresh For All distributions in Camden, Upper Darby and Souderton. As people in low-income communities may have more instances of health issues such as diabetes and high cholesterol, offering free produce and cooking instruction helps provide clients with healthy and delicious meal alternatives.

“We have found very clearly that our existing agency network is much stronger when we augment it with schools, military bases and social service agencies,” said Sean Breslin, Philabundance Manager of Member Relations.



145,000 lbs
OF FOOD WAS GIVEN TO
STUDENTS THROUGH
THE BACKPACK
PROGRAM

We are grateful for the volunteers who help make our food distributions run so smoothly.

Philabundance Community Kitchen

COOKING UP A NEW WAY TO GIVE BACK

For twenty years, Philabundance Community Kitchen (PCK), our culinary job training program, has placed about 80 percent of its graduates in private sector jobs AND produced thousands of meals for the hungry in the process.

But in a region with so many social challenges, the question is: what more can and should PCK do?

HOW ABOUT A CATERING BUSINESS?

PCKatering is a new social enterprise that will strengthen PCK with more training opportunities for students, more jobs for graduates, more revenue and more community and business engagement.



For every order placed, luncheon served or gig catered, proceeds benefit students, graduates and our neighbors in need.

PCKatering carefully controlled the amount of business it took on in its first year of operation accepting, on average, just two jobs per month,

such as the WHYY Youth in Media awards reception and the Reentry Project's Blueprint Reception.

"With a year under its belt, PCKatering can take on more jobs and help feed more people in need," said Candace Matthews-Bass, PCK Director.

In addition to growth planned for PCKatering, we seek to expand the entire PCK program by securing a new facility that would allow us to increase class sizes, meal production and catering jobs in 2018.

"During our pilot year, our students and graduates prepared corporate lunches and hors d'oeuvres for receptions and provided on-site service," said Candace Matthews-Bass, PCK Director. "Through these experiences, students not only work in the back of the house, but also get a chance to experience the events as servers – truly learning the importance of a smoothly-run operation."





“

“With a year under its belt,
PCKatering can take on more jobs
and help feed more people in need.”

”

– Candance Matthews-Bass
PCK Director



Chef Hugo informs PCK students on
proper baking methods.

the new face OF PHILABUNDANCE

A new website isn't just a minor marketing improvement, but a critical platform by which to engage partners and donors and meet our mission of driving hunger from our communities today and ending hunger forever.

In this digital age, our five-year-old website was dated, an insufficient guide for visitors and not mobile friendly... at all.

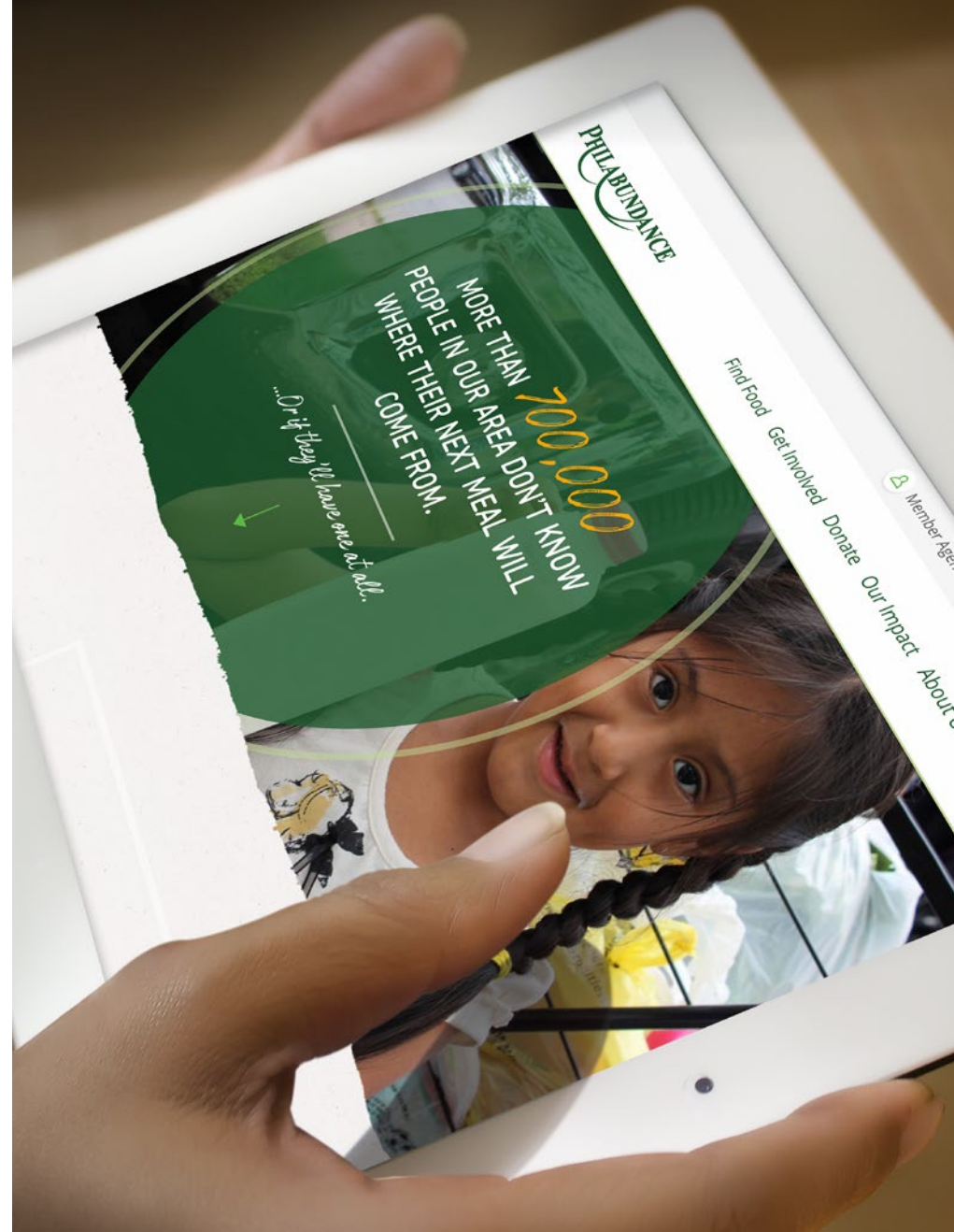
Thanks to the generous support of a single contributor, in 2017 we secured the services of a web design agency that designed and produced a website showcasing who we are, what we do and how YOU support us in the fight against hunger.

New and exciting elements include a food map where clients can search by zip code to find free food closest to them, expanded options of how the public can help and an impact section that offers client stories and news that will inspire new visitors to our site to become Philabundance supporters.



CHECK OUT OUR NEW SITE
www.philabundance.org

The new Philabundance website is now accessible on all mobile devices.





Fare & Square

CELEBRATES 4 YEARS

After four years in operation, Fare & Square has helped dissolve the food desert in the City of Chester and improved the economy and community by providing a full-service grocery store, creating significant partnerships, employing local residents and focusing on healthy eating.

During 2017, Fare & Square established a partnership with the Chester Housing Authority, which operates the Ruth L. Bennett Community Farm. The partnership provides economic assistance to the two-acre farm and offers Chester residents locally-grown, healthy food.

In addition to selling locally-grown produce, Philabundance is now distributing about a half a million pounds of fresh fruits and vegetables, valued at roughly \$1 million, to Fare & Square customers for free.

For several years now, Fare & Square has partnered with The Food Trust, which offers healthy eating classes for consumers. For the first time, in 2017 the Food Trust ran a farmers market outside the supermarket during the summer months. The partnership brought more shoppers to the grocery store, and those who took advantage of the healthy eating classes received gift cards for use at Fare & Square.

“When we are all working together, we achieve so much more,” Mike Basher, VP of Retail Operations.

Fare & Square vegetable shelves are always stocked with fresh produce.

new

LEADERSHIP

1 LYNN MANSON

VICE PRESIDENT OF HUMAN RESOURCES

With 15 years of HR leadership positions in for-profit and non-profit settings, Lynn has helped a variety of organizations manage through periods of change. Arriving at Philabundance in September 2017, she supervises all HR functions, including recruitment, compensation and benefits, employee relations and talent development.

2 LAURA SCHEPPS

SENIOR VICE PRESIDENT, CHIEF FINANCIAL OFFICER

After holding senior finance positions at two universities and three for-profit businesses, Laura joined Philabundance in August 2017. She serves as the strategic business partner of the organization's executive director, and she supervises the accounting department, the budget process, the production of financial reports and tax filings, as well as external and internal audit activities.

1



2





In-Kind CONTRIBUTIONS

We are grateful to the following businesses, companies and individuals for their in-kind contributions

- Clear Channel Outdoor
- Comcast Spectacor (In conjunction with the Tri-State Toyota Dealers Association)
- David Discenza, Discenza Business Continuity Solutions
- Keystone Outdoor
- Outfront Media
- Philadelphia Media Network/Philadelphia Inquirer
- Produce Business News
- Steen Outdoor Advertising/Lamar Advertising

TOGETHER
25 million
MEALS WERE
DISTRIBUTED

We could not do all we do without the support of our generous donors and volunteers.

2017

BOARD OF DIRECTORS

BOARD CHAIR

Noel Eisenstat, Noel Eisenstat, LLP

VICE CHAIR

John Hollway, Quattrone Center for the Fair
Administration of Justice, University of Pennsylvania Law School

VICE CHAIR

Dixieanne James, Einstein Healthcare Network

SECRETARY

Karyn S. W. Polak, PNC Bank, National Association

TREASURER

Andrew Sandifer, FMC Corporation

BOARD MEMBERS

Bassam Awadalla, Bank of America

Jacqueline Brady, CenterSquare Investment Management, Inc.

Alan Casnoff, P&A Associates

Tracy Davidson, NBC10

Dianne Elderkin, Akim Gump Strauss Hauer & Feld, LLP

Robert Kane, KeyBank

Aaron Krauss, Cozen O' Connor

Murvin Lackey, Retired

Furrukh Munawar, Devon Hill Capital Partners

Beryl Simonson, Retired





Top FOOD DONORS

- Acme
- Ahold Giant
- Albert's
- Bimbo Bakeries
- BJ's Wholesale Club
- Del Monte
- HP Hood
- Pinto Brothers
- Procacci Brothers Sales
- Redner's
- Sam's Club
- ShopRite
- SOL Group Marketing Company
- Target
- Walmart

consolidated STATEMENT OF FINANCIAL POSITION

Current Assets	2017	2016
Cash and Cash Equivalents	\$1,141,096	\$798,359
Restricted Cash	44,433	64,433
Investments	1,517,039	1,424,169
Accounts Receivable	355,272	395,130
Grants Receivable		
Current Portion of Pledges Receivable	249,500	94,719
Inventory	1,775,879	2,290,369
Other Current Assets	128,523	123,434
Prepaid Expenses, Deposits and Other	302,300	397,081
Total Current Assets	5,514,042	5,587,694
Notes Receivable	5,039,250	5,039,250
Pledges Receivable, Less Current Portion	56,000	50,000
Property and equipment	10,532,951	10,606,109
Intangible Assets, Net	25,667	148,220
Beneficial Interest	14,403	13,362
Total Assets	\$21,182,313	\$21,444,635
Liabilities and Net Assets		
Current Maturities and Capital Leases	\$67,734	\$69,400
Current Maturities and Long-Term Debt	122,692	121,804
Accounts Payable and Accrued Expenses	1,013,833	1,243,506
Deferred Income	301,415	256,692
Total Current Liabilities	1,505,674	1,691,402
Long-Term Liabilities		
Long-Term Debt, Less Current Maturities	8,919,494	9,122,340
Capital Leases, Less Current Maturities	302,176	26,169
Total Long-Term Liabilities	9,221,670	9,148,509
Total Liabilities	21,182,313	10,839,911
Net Assets		
Unrestricted	7,990,037	8,572,008
Temporarily Restricted	2,080,288	1,648,072
Permanently Restricted	384,644	384,644
Total Net Assets	10,454,969	10,604,724
Total Liabilities and Net Assets	\$21,182,313	\$21,444,635

OPERATING REVENUE	Unrestricted	Temporarily Restricted	Permanently Restricted	2017 Total	2016 Total
In-Kind Food	37,847,888			\$37,847,888	33,905,356
In-Kind Goods and Services	146,894			146,894	294,073
Grants and Contributions	10,338,082	2,492,732		\$12,830,814	\$11,789,696
Fees for Service	1,377,487			1,377,487	1,461,189
Rental Income	80,094			80,094	72,278
Community Purchase Program/Lehigh Sales	1,385,261			1,385,261	1,016,595
Less: Cost of Goods Sold	(1,207,847)			(1,207,847)	(824,107)
Gross Profit	177,414			177,414	192,488
Retail Grocery Sales	2,885,907			2,885,907	2,872,953
Less: Cost of Goods Sold	(2,476,642)			(2,476,642)	(2,414,528)
Gross Profit	409,265			409,265	458,425
Net Assets Released from Restrictions	2,060,516	(2,060,516)			
Total Operating Revenue	52,437,640	432,216		\$52,869,856	\$48,173,505
Expenses					
Program Services	48,525,823			48,525,823	43,849,310
Management and General	1,969,360			1,969,360	1,937,421
Fundraising	2,783,248			2,783,248	2,626,163
Total Operating Expenses	53,278,431			53,278,431	48,412,894
Change in Assets from Operating Activities	(840,791)	432,216		(\$408,575)	(\$239,389)
Nonoperating Activities					
NMTC Developers Fee					
Interest Income and Dividends	55,349			55,349	46,669
Change in Beneficial Interest	1,041			\$1,041	\$228
Endowment Distribution Income	38,702			38,702	37,116
Realized Gain on Investments	20,553			20,553	5,550
Unrealized Gain on Investment	76,186			76,186	80,779
Other Income	66,989			66,989	11,903
Total Nonoperating Activities	258,820			\$258,820	\$182,245
Change in Net Assets	(581,971)	432,216		(\$149,755)	\$10,661,868
Net Assets — Beginning of Year	8,572,008	1,648,072	384,644	\$10,604,724	\$10,661,868
Net Assets — End of Year	7,990,037	\$2,080,288	\$384,644	\$10,454,969	\$10,604,724

2017 DONORS

\$100,000+

Alliance Marketing Partners, LLC
Anonymous (2)
Community Food Bank of New Jersey
The Energy Transfer/Sunoco Foundation
Estate of Mark A. Brooks
Feeding America
United Way of Greater Philadelphia
& Southern New Jersey

\$50,000 - \$99,999

The Bank of America Charitable Foundation, Inc.
Benevity Community Impact Fund
The Claneil Foundation
Connelly Foundation
General Mills Foundation
Giant Food Stores, LLC
GlaxoSmithKline
Lightening the Load Foundation
Our Family Foundation
The Pew Charitable Trusts
Philadelphia Area Combined Federal Campaign
The Phillies
Red Moose Charitable Trust
Mr. and Mrs. Milton S. Schneider
The ShopRite Partners in Caring Fund
Subaru of America, Inc.
TD Charitable Foundation
Wakefern Food Corporation
The Wawa Foundation
Wegmans Food Markets, Inc
YourCause

\$25,000 - \$49,999

Albertsons Store Support Center
Reverend and Mrs. Kurt H. Asplundh
Mr. and Mrs. William P. Becker
Citizens Charitable Foundation
Enterprise Holdings Foundation
Estate of Marian E Reinheimer
FMC Corporation
The Gitlin Foundation
GiveSmart US
Land O'Lakes Foundation
The McLean Contributionship
The Miralie Fund
MKM Foundation
Network for Good
OSIsoft Inc.
The Scholler Foundation
The W. W. Smith Charitable Trust
Tanner Industries, Inc.
The TJX Companies, Inc.
Tri State Toyota Dealers Association
Troy & Sherri Williams Foundation for Education, Inc.
Wyss Charitable Endowment Fund

\$10,000 - \$24,999

The 1830 Family Fund
Angelakis Family Foundation
Anonymous (4)
The Apatow-Mann Family Foundation, Inc.
Aqua Chairtable Trust
Ms. Carol Baker and Mr. Mark E. Stein

Mr. and Mrs. Joseph R. Baxter
 Berkowitz Family Foundation
 The Benjamin Bibler Memorial Fund
 Blue Jean Chef, Inc.
 Dr. Kent Bottles and Dr. Ann L. Steiner
 Ms. Jacqueline V. Brady
 Brenner Family Giving Fund
 Brit Insurance Services USA, Inc.
 Capital One Community Affairs
 Cardone Family Foundation
 CHG Charitable Trust
 The John E Core Fund
 Catherine F. Corrigan, Ph.D. & Gerald R. Buday
 The Foundation for Enhancing Communities
 Estate of David J. Speiser
 Estate of James A. Black, Jr.
 Feeding Pennsylvania
 Flyers Charities
 Four Seasons Produce, Inc.
 Fred Beans Holdings, Inc.
 The Fund for Charitable Giving
 Gene and Marlene Epstein Humanitarian Fund
 Mr. and Mrs. Dominic S. Genuardi, Jr.
 The George and Elizabeth Gephart Charitable Fund
 Mr. and Mrs. Frank A. Giovannone, Jr.
 The Haley Foundation
 Ms. Kathryn S. Hayes and Mr. Victor J. Tortorelli
 HealthSpark Foundation
 House of Blues - Punchline Corp Penn
 Hoxie Harrison Smith Foundation
 Mr. and Mrs. Philip E. Hughes, Jr.
 Independence Foundation

JustGive.org
 KieranTimberlake
 The James & Agnes Kim Foundation
 Ms. Susan Y. Kim
 The Patricia Kind Family Foundation
 Polly A Levee Charitable Trust
 Ms. Karen Lien and Mr. Scott A. Hutchinson
 Abe Littenberg Foundation, Inc.
 Stanley and Lucy Lopata Charitable Foundation
 Macquarie Group Foundation
 Ms. Cheryl A. Martin
 Mr. and Mrs. David J. McKee
 Mr. Bruce McKittrick and Ms. Wendy E. Wilson
 Ms. Maxine Munter and Dr. Mary Ann Keenan
 The Murdock Family Charitable Fund
 My City Gives, LLC
 Nararo Foundation
 PayPal Giving Fund
 Philadelphia Eagles
 PNC Charitable Trusts
 Karyn and Aaron Polak
 Reliant Energy Northeast, LLC
 Lawrence J. and Anne Rubenstein Charitable Foundation
 Mr. Kevin C. Schildt
 Schwab Charitable Fund
 The Snider Foundation
 SocketLabs, Inc.
 Taste of the NFL - Hunger Related Events
 Ms. Virginia W. Toomey
 VNA Foundation of Greater North Penn
 Mr. James H. Wallace and Ms. Kelly J. Baker

\$5,000-\$9,999

Ahold Financial Services
 Ms. Hilary M. Alger
 Mrs. Aasima Ali
 Anonymous (9)
 Ms. Oneida A. Arosarena
 Mr. and Mrs. Brendan Benner
 Boeing Employees Community Fund
 Boscia Family Foundation
 Bottleneck KOP, LLC
 Ms. Dierdra E. Bowditch
 Thales and Sally Bowen Fund
 Dr. and Mrs. Joseph H. Brezin, Jr.
 Dr. David G. Brock and Dr. Carole Sable
 Mr. Alan G. Burrell
 Robert W. Carlson, MD and Stacey A. Starcher Fund
 Mr. J. Alexander Churchman
 Mrs. Mary Lynne Clark
 The Classic Coachwork Group, Inc.
 Dr. Eric N. Clausen
 Clear Skies Fund of the Bank of America Charitable Gift Fund
 Clearco Products Co, Inc.
 Mr. and Mrs. David Clinton
 Cohen/Goodman Family Fund
 Colonial Volkswagen Subaru
 Delaware County Economic Development Oversight Board
 Mr. and Mrs. Joseph P. Denny
 Mr. and Mrs. John C. Dodds
 Mr. Robert R. Donecker
 Mr. and Mrs. George N. Dorshimer

\$5,000-\$9,999 (CONT.)

Eastern Produce Council, Inc.
Eden Charitable Foundation
Mr. Noel Eisenstat and Ms. Beth Rosenbaum
Elmer Roe Deaver Foundation
Mrs. Elisabeth C. Erlbaum
Dr. Amy Espeseth
The Fann Family Foundation
Moses and Susan Feldman Fund
FJN Charitable Foundation
Mr. and Mrs. Michael J. Flamer
Mr. Thomas Forst
Mr. and Mrs. Michael L. Forwood
Mr. Lewis E. Fountain
Frezel Family Foundation
Mr. and Mrs. Bernard C. Friel
Ms. Caroline Fulginiti
Ms. Patricia Furlan
Mr. Stephen Gardner
Ms. Dina Ghen
Global Indemnity Group, Inc.
Mr. Joel K. Greenberg and Ms. Marcy B. Gringlas
Greenley Family Fund
Mr. Lou Greisiger and Ms. Kelly P. Johnston
Mr. and Mrs. Lee S. Grout
Mr. and Mrs. David J. Healy
Ms. Susan M. Hennessey
Herson-Stirman Family Foundation
Mr. and Mrs. Stephen P. Heverin
Prof. Nancy J. Hirschmann and Prof. Christian J. Stoeckert

Mr. John M. Hopkins
Hunger Burger Philly, LLC
Dr. Evan Husted
Independence Blue Cross Foundation
Irish Pub Children's Foundation Inc.
JK Group, Inc.
JKR Partners, LLC
Mr. William T. Josem and Ms. Nancy Adler
JPMorgan Chase Foundation
Judith Haskell Brewer Fund
Mr. and Mrs. Robert H. Knauss
Aaron R. Krauss, Esq.
Mr. and Mrs. John J. Kruse
The Kuebler Family Foundation
Leff Family Foundation
Legg Mason, Inc.
Mr. John S. Lowe and Ms. Ann E. Hutchinson
Mr. and Mrs. Michael J. Lynch
Mr. and Mrs. C. Richard Lyttle
Jane C. MacElree Family Foundation
Macy's/Bloomingdale's
Resi T. Maddox
Maverick Capital Foundation
Mr. and Mrs. James S. McGlone
Mr. and Mrs. Raymond McGowan
The Curtis W. McGraw Foundation
MedRisk, Inc.
Mr. and Mrs. Shawn Mulford
Mr. and Mrs. Lawrence P. Musser
Novartis Pharmaceuticals, Corp.
Mr. and Mrs. Edward W. O'Connor

Ms. Marie O'Donnell
Mr. Kevin P. O'Flaherty and Ms. Debra C. Karlan
The Lynne and David Oppenheim Family Fund
Mr. Neil Oxman
Pardee Resources Company
PCTC47 Gift Fund
The William Penn Foundation
The Philadelphia 76ers
Phillies Charities, Inc.
Pizza by George, Inc. (dba By George! Pizza)
Ms. Virginia F. Pusey and Mr. David Wright
Quaker Maid Meats, Inc.
Renewal By Andersen
Mr. and Mrs. Howard R. Ross
The Elizabeth B. and Arthur E. Roswell Foundation
Eleanor J. Roth Charitable Trust
Mr. and Mrs. Andrew D. Sandifer
Mr. Kurt W. Schoenkopf
Mr. Timothy Schofield
Mr. and Mrs. Scott F. Schumacker
Robert and Diana Scott Fund of the Ayco Charitable Fnd.
Mr. and Mrs. Frank L. Seidman
SEPTA
Ms. Gail E. Seygal
Ms. Antoinette F. Seymour
Mr. and Mrs. Marc M. Silbert
Mr. Douglas Simon
Ms. Susanna Siskind
Mrs. Christine J. Smith
Ethel Sergeant Clark Smith Memorial Fund
Drs. Robert and Andrea Solomon

Spray Products Corporation
 St. John's Presbyterian Church
 Mr. and Mrs. Gregory G. Stahl
 Dr. Paul Stephens and Dr. Tyra C. Bryant-Stephens
 Dr. Ruth I. Stolz
 Mr. and Mrs. Thomas Thomas
 The Tosh Company
 Triumph Group, Inc.
 Mr. and Mrs. Richard L. Umbrecht
 United Way of Bergen County Charitable Flex Fund
 United Way of GR
 Mr. Albert C. Vara
 David and Elsie Viehman Charitable Fund
 Ms. Martha J. Wallace
 Ms. Teresa A. Wallace and Mr. John G. Chou
 Wally and Christina Charitable Fund
 Ms. Kerry Ward
 Mr. and Mrs. Donald W. Weaver
 Wells Fargo Foundation
 Mr. Daniel H. Wheeler and Ms. Amy A. Fox
 Dr. Nancy Woo
 Xfinity Live! - PL Phase One Operations, LP
 Zarwin, Baum, DeVito, Kaplan, Schaer & Toddy, PC
 Mr. and Mrs. Steven P. Zuk

\$2,500.00 - \$4,999

M Mr. and Mrs. Mark C. Aaron
 Mr. and Mrs. Eric J. Abel
 Ms. Katherine E. Adell
 Administrative Concepts, Inc.
 Alvarez Fight Enterprises, LLC

America's Charities
 AmeriHealth Caritas
 Mr. and Mrs. Peter Ammon
 Anonymous (8)
 Dr. Linda M. Chaille-Arnold and Mr. Daniel C. Arnold
 Mr. David Atkinson
 Mr. Bassam Awadalla
 Lt. Col. Hubert R. Baker, Ret.
 Mr. and Mrs. David P. Balamuth
 Mr. Walter B. Banker, III
 Ms. Justina Baptiste
 Ms. Jackie Beauchemin
 Mr. William C. Bensley
 Mr. and Mrs. Casey Blood
 Mr. and Mrs. Michael C. Boles
 Mr. James R. Bowers
 Mr. and Mrs. Domenic Braccia
 Mr. and Mrs. Jeffrey B. Bracciale
 Ms. Debra Brannan
 Mr. John Brennan
 The Brevoort Fund
 The Bridgehaven Foundation, Inc.
 Bright Funds Foundation
 Ms. Diane C. Brosso
 Mr. and Mrs. John E. Buhl
 Mr. and Mrs. Mark Edmund Burgert
 Mr. and Mrs. Bransby W. Bushey
 C. Richard and Joanne Moyer Gift Fund
 Alpin J. & Alpin W. Cameron Memorial Fund
 The Caraher Charity
 Ms. Margaret A. Carson Gable

Dr. Susan Carswell and Dr. Andrew N. Binns
 The George S. Case, Jr. Family Charitable Trust
 Ms. Eleanora L. Cheney
 Chester Housing Authority
 Christopher and Amy Cleary
 Clif Bar Family Foundation
 Mrs. Merrie Lou Cohen
 Mr. and Mrs. Jim Collins
 Zeli Colon
 Comcast Corporation
 The Comcast Foundation
 Comcast Spotlight
 Mr. Billy Frank Cooper, Jr.
 Cozewith Family Fund
 Mr. John P. Cronan
 Mr. and Mrs. Kevin P. Croy
 Mr. David A. Dambly
 Mr. and Mrs. Keith Dasher
 Mr. Clark Dehaven
 Mrs. Ineke M. Dikland
 Dolfinger-McMahon Foundation
 Ms. Joan Duckenfield
 Mr. Robert B. D'Zuro and Ms. Kathleen E. Sullivan
 Eckhardt Family Charitable Fund
 Ms. Bonnie W. Eisenfeld
 Ms. Claudine G. El-Beyrouty
 Mr. Benjamin Elbirt
 Ms. Mary Ersek and Mr. Gerard Schellenberg
 Estate of Paula Needs Glazier
 Mr. Benjamin Falk
 The Fallen Angels Foundation, Inc.

\$2,500.00 - \$4,999 (CONT.)

Mr. and Mrs. Scott L. Fast
Fingerpaint Marketing
Dr. and Mrs. Garrett Fitzgerald
Foot Locker, Inc.
Mr. and Mrs. Robert A. Fox
Ms. Marilyn A. Fox
Ms. Nancy Freudenthal
Mr. and Mrs. John R. Fulton III
Dr. and Mrs. Satoshi Furukawa
Mr. and Mrs. James Gallagher
Garden State Tile Distributors, Inc.
Mr. Earl Gaskins
Mr. and Mrs. Leonard J. Gatti
Mr. and Mrs. Michael J. Gebka
General Building Contractors Association
Ms. Alice L. George
Mr. James F. Giblin and Ms. Emilla L. DeMarco
Ms. Elizabeth Glatfelter
Global Impact
GMRI, Inc.
Mr. Paul Grafinger
Greater Berks Food Bank
Ms. Danielle Greshock and Mr. Joel Greshock
James and Mignon Groch Fund
Hagar Family Foundation
Mr. Charles S. Hagelin
Mr. and Mrs. Louis I. Hamilton
Mr. and Mrs. Thomas Mark Hanrahan
Gayle S Harmer Donor Advised Fund
Mr. and Mrs. Scott E. Harrington

Mr. and Mrs. Thomas H. Harris
Dr. and Mrs. C. Terrance Hawk
Mr. Luke Hickey
Ms. Samantha Hidlebird
Mr. David L. Homer
Ms. Barbara E. Horan
Dr. Cyrus M. Hoseyni
Ms. Tina M. Hughes
Ms. Mary P. Hugues
Mrs. Alice C. Humphrey
Ms. Laurie Humphreys
Ms. Constance C. Hungerford
I.L. Cohen Foundation
Mr. and Mrs. Matthew H. Kamens
Kampus Klothes Inc.
Mr. Joseph C. Kearns and Mr. Marc Kearns
Mr. and Mrs. Robert E. Keith, Jr.
Mr. and Mrs. J. Michael Kennedy
Estate of William C. Kent
Mr. Paul L. Koser and Ms. Barbara K. Kuter
KPMG Involve Community Campaign
Mr. William Labov and Ms. Gillian Sankoff
Rebecca Levine and Christopher Morrell
Dr. William P. Liberi and Ms. Linda C. Wingate
Christian R. and Mary F. Lindback Foundation
Mr. Alan Lindy
Mr. and Mrs. Stanley H. Loose, Jr.
MaGerks Ft Washington Inc
Mr. Mark Mallon and Dr. Susanne Mallon
Mr. Jason Marcewicz and Ms. Stacy M. Borans
Dr. Andrew P. Marcus

Mr. John K. Marple
Mr. James Martin
Mr. and Mrs. David F. Martin
The Matthews Stein Family Fund
Mr. Thomas McCarthy
Mrs. Carolyn K. McConomy
Mr. Jeffrey Miller
Dr. Randall M. Miller
Mr. and Mrs. Christian M. Milton
Mr. and Mrs. William F. Montgomery III
Mr. George Moosburner
Dr. and Mrs. Donald E. Morel, Jr.
Denise and Thomas Mroz
The John and Shirley Nash Foundation
Mr. and Mrs. Christopher J. O'Brien
Prof. Karl S. Okamoto and Mrs. Tecla J. Borick
Ms. Christina Pappajohn
Dr. and Mrs. Peter R. Paradiso
Mr. Matthew Pearson
Ms. Catherine P. Peklak
Mr. and Mrs. George Pelan
Philadelphia Baptist Association
Dr. Stacey E. Philpot
PJM Interconnection, LLC
Pleasantville United Church of Christ
Mr. William R. Plunkett
Poor Richard's Charitable Trust
Powell Family Foundation



Progress Family Foundation Inc
 Mr. William Carl Randall
 The Honorable Robert J. Rebstock
 Mr. and Mrs. William Reckmeyer
 The Dale L. Reese Foundation
 Mr. Andrew P. Reeve
 Mr. Jason M. Rekulak and Ms. Julia L. Scott
 Miss Maureen E. Reynolds
 Mr. James Richvalsky
 Rock of Ages Inc. T/A Tattooed Moms
 Mr. and Mrs. Bryan G. Rogers
 Mr. and Mrs. Joseph A. Rolley
 Ms. Heather J. Rossman and Mr. Austin S. Faberman
 Suzanne Rotondo, LLC
 The Royalty Trust
 Dr. Margaret T. Ryan and Mr. Michael Ryan
 Saber Healthcare Foundation
 Mr. and Mrs. Theodore Schaer
 Schaub v. Iron Hill Qualified Settlement Fund
 Mr. Karl F. Schmidt
 The Mike and Rebecca Schmidt-Lange Charitable Fund
 Mr. Gene S. Schneyer and Ms. Debra J. Appel
 Ms. Jessie R. Schol
 Mr. Matthew Schultz
 Ms. Ellen Schwartz and Mr. Jeremy Siegel
 Ms. Carole Sclafani
 Dr. and Mrs. Peter V. Scoles
 Mr. David A. Scott
 Scudder Family Foundation, Inc.
 Mr. Brendan J. Sherman
 Ms. Edith A. Shooster

Mr. and Mrs. Larry Shore
 The Sidewater Family Foundation, Inc.
 Mr. Joseph F. Sifer
 Mr. Arthur R. Silverberg
 Mr. and Mrs. Charles H. Silverman
 Mr. Beryl D. Simonson
 Mr. William R. Small
 Mr. and Mrs. Donald W. Smith
 Ms. Susan B. Sorenson and Mr. Richard A. Berk
 Mr. Robert Stadnicki
 Mr. J. Brian Stalter
 Mr. and Mrs. Harold Starr
 Mr. David R. Stern
 Mr. Robert K. Stetson
 Stitz Coleman Charitable Fund
 The Terry Thomas Sweet & Megan Heller Sweet Charitable Fund
 The Tega Fund
 Ms. Barbara A. Teichert
 The Philip and Ruth Mosely Fund
 Toyota Financial Services
 Mr. Neil Trenk
 Ms. Brigitte Trevidic
 Mrs. Katy Trosini
 Mr. and Mrs. Irving Tyler
 United Way of Delaware
 United Way Of Greater Atlanta
 United Way of Greater Portland
 Ms. M Rita Valois
 Van Aken Family Foundation
 Mr. David A. Venable
 Arlene N. Voellm

Mrs. Margaret Wales
 Wallingford Presbyterian Church
 Mr. and Mrs. Hans E. Huerkens
 Mr. Steven J. Watter and Ms. Katherine P. Heston
 Weavers Way Cooperative Association
 White Horse RV Center
 William Penn House Council
 Senator Anthony Williams
 Ms. Laura J. York
 Mr. John J. Zabinski
 Mrs. Josephine F. Zelov
 Mr. Sherwin E. Zitomer

\$1,000 - \$2,499

Judith and Mark Brodsky Charitable Fund
 Mr. Vincent T. Abessinio
 Ms. Thea R. Abu El-Haj and Mr. Steven Rosenzweig
 The Jane and Abass Alavi Fund
 Mr. Stephen Albert and Ms. Barbara B. Wachter
 Ms. Nancy L. Alessi
 Mrs. Elizabeth J. Allen
 Mr. and Mrs. Paul N. Allen
 The Morris, Max and Sarah Altman Memorial Trust
 Mr. Steven L. Altomare
 AmazonSmile Foundation
 Mr. and Mrs. Ron Anafi
 Mr. Dean Anderson
 Mr. and Mr. Thomas C. Anderson
 Dr. Eugenius Ang
 Ms. Deborah A. Angeloni
 Anonymous (26)

\$1,000 - \$2,499 (CONT.)

Mr. Michael D. Anthony
Mr. Christopher Antoniacci
Ms. Jean Marie Arduino
Peter H. Arger, M.D.
Dr. Clay M. Armstrong and Dr. Clara F. Armstrong
The Arnold Family Fund
Ashley Advertising Agency
Mr. and Mrs. Jon C. Ashley
Ms. Kimberly Aspenleider
Mr. and Mrs. E. Boyd Asplundh
Ms. Elizabeth A. Asplundh
Mr. Vincent J. Aurilio
Dr. Edythe B. Austermuhl and Mr. Charles B. Austermuhl
Shaheen Ayubi
Mr. Jeff Bairstow
Ms. Mary E. Bak
Dr. Andrea Baldeck
Mr. and Mrs. Thomas G. Bale
Mr. and Mrs. Paul Bankes, Jr.
Mr. and Mrs. Gregg A. Barnett
Dr. and Mrs. Allen H. Bar
Mr. Paul R. Barbin
Mr. and Mrs. Timothy B. Bard
Mr. Michael Barmash
Mr. and Mrs. Richard A. Baron
Dr. and Mrs. Richard J. Baron
Mr. Gordon Barr
Mr. and Mrs. Thomas P. Barr
Mr. Charles Barscz, Jr.

Mr. Todd D. Barton and Ms. Mary Elizabeth Kreider
Bassman Family Fund
Mr. and Mrs. Timothy D. Bauder
Mr. and Mrs. John L. Baumgardner
The Bazemore Group, LLC
Mr. John J. Bazik
Beasley Media Group, Inc
Ms. Catherine V. Beath
Mr. and Mrs. Edward V. Beazley
Beazley USA Services, Inc.
Ms. Diane Bech
Mr. and Mrs. Noah S. Becker
Mr. and Mrs. Frederick A. Beckley
Mr. and Mrs. Robert J. Bedor
Dr. Edward L. Bedrick and Mrs. Amy Brantz and Family
Mr. Charles L. Behrend
Mr. George Belfatto, Jr.
Mr. and Mrs. David M. Bell
Mr. and Mrs. Gregory J. Bell
Jay and Kathy Bellwoar
Mr. and Mrs. Mark E. Bender
The Beneficial Foundation
Mr. Richard Bennett
Mr. and Mrs. John D. Benson
Mr. and Mrs. Richard P. Berenson
Ms. Jane E. Berger
Mr. Glenn Bergman and Ms. Dianne Manning
The Berkman Family Charitable Fund
Mr. and Mrs. Jesse A. Berlin
Ms. Susan Best and Mr. Francis Talarowski
Bevtek, Inc.

Mr. and Mrs. Stephen A. Biddle
Mr. Andrew J. Bilotta, Jr.
Ms. Andrea Biondo
Richard and Lee Birkhold
BL Companies
Mr. and Mrs. Paul Black
Ms. Maryann Blake Connolly
Ms. Wendy P. Blanchard
Mr. Christopher S. Bland
Ms. Julie I. Blank
Bluestone Foundation
Mr. Robert A. Boag
Mr. and Mrs. Richard Boardman
Mr. and Mrs. David Bobey
Bob's Discount Furniture Charitable Foundation, Inc.
Mr. Frederick J. Boehlke, Jr.
Employee's Community Fund of the Boeing Company
Mr. Donald Bogert
Silas Bolef Company
Mr. Joseph C. Bondi
Mr. Raymond Bonikowski
Ms. Ernestine F. Boone
Dr. Stacy Borans
Mr. Greg Borgman
Mrs. Patricia G. Born
Mr. Mat M. Bowen, Jr.
Dr. Cyndy Boyd
Mr. and Mrs. David S. Boyer
Mr. Philip J. Boyle
Mr. Edward C. Bradley
Brady Family Charitable Fund

Mr. and Mrs. William P. Brady
Ms. Angela Brannon
Mr. and Mrs. William Braun
Ms. Kathleen J. Brennan
Mr. Michael J. Brennan
Mr. and Mrs. Jeffrey T. Bretz
Mr. Richard L. Brickel
Ms. Melanie B. Bristol and Ms. Margaret Burks
Mr. and Mrs. David J. Brodsky
Mr. Albert B. Brooke and Mrs. Anna Childress
Ms. Michele V. Brotman
Mr. Richard S. Brown
Mrs. Verna V. Brown
Mrs. Annemarie Brownmiller
Mr. Eric J. Bruskin
Mr. and Mrs. Devin Bruton
Mr. Dale Bryant
Mr. Scott E. Buchheit and Ms. Pamela L. Perry
Mr. James S. Buckman and Van Mai Hoang
Mr. and Mrs. William A. Bullotta
Mr. and Mrs. Thomas Bunting, III
The Nancy J. Burack Charitable Fund
Mr. Carl Burke
Mr. and Mrs. Michael B. Burns
Ms. Susan Burt-Collins
Mr. and Mrs. Todd Byers
Mr. Armando M. Byrne and Ms. Deborah D. Jaworski
Michael and Sharon Byrne Charitable Fund
Dr. Rosemary Cadigan
Mr. and Mrs. Jeff D. Cairol
Mr. Christopher Calabrese

Dr. Stacie Calad
Caliber Holdings Corporation
Mr. and Mrs. Daniel W. Callard
Mr. and Mrs. Jason S. Camilo
Mr. Ronald J. Campbell
Capital Management Services, Inc.
Cards for Causes
Ms. Jennifer E. Cardy
Mr. Donald L. Carnahan
Mr. and Mrs. A. Robert Carnevale
Mr. and Mrs. Albert E. Carocci
Dr. and Mrs. William Carroll
Ms. Karen Carter
Mr. Carl Caruso
The Casnoff Family
Mr. and Mrs. Robert S. Castellucci
Ms. Carol Catalano
Catanes Media, Inc.
The CBPC Charitable Foundation
Cedar Hill Advisors, LLC
Central Atlantic Toyota
Central Soup Society of Philadelphia
Mr. Paul R. Cervone
Mr. and Mrs. Gary R. Cesnik
Mr. and Mrs. Warren B. Chaiken
Mr. and Mrs. Hugh Chairnoff
Mr. Robert Challenger
Mr. Christopher B. Chandor
Charity Gift Certificates
Mr. Jonathan Cheng
R.L. Chernoff Family Fund

Mr. Peter L. Cherpack
Mr. and Mrs. Robert E. Chevalier
Mr. David Chianese and Ms. Pamela Edmonds
Mr. and Mrs. Homyar Choksi
Mr. and Mrs. Joseph P. Christ
Mr. Paul T. Christensen
Christie & Young, PC
Mr. Todd Cipperman
Claddagh Fund Charities
Mr. Daniel R. Clark
Ms. Stephanie A. Clark
The Peter and Diane Classen Family Fund
Mr. and Mrs. Brian E. Clauser
Mr. Chandler Claxton
Mr. and Mrs. John M. Cleary
Mr. Robert Cleary
Mr. and Mrs. Edward B. Cloues
The Rami Cobb Charitable Fund
Mr. and Mrs. Mark A. Coblitz
The Morris and Hedy Cohen Charitable Fund
Mr. and Mrs. Daniel J. Cohen
Dr. David H. Cohen and Ms. Rachel Pastan
Alma and Sylvan Cohen Family Philanthropic Fund
Mr. Jonathan S. Cohen and Ms. Mary K. Hasbrouck
Mr. and Mrs. Michael Cohen
Mr. Steve D. Cohen
Mr. Gregory L. Coleman
Ms. Nancy E. Coleman
Mr. and Ms. Daniel R. Coll, Jr.
Coltman Family Foundation
COMEG Corporation

\$1,000 - \$2,499 (CONT.)

Mr. and Mrs. James L. Comerford
Mr. Stephen E. Comess
Mr. Russell Confer
Mr. Douglas Conn
Minister Kevin Connell
Connelly Family Fund
The Conston Foundation
Mr. and Mrs. Norman R. Conte
Dr. and Mrs. David G. Cook
Mr. Matthew Cooper
Dr. Melisa Cooper
Mr. and Mrs. Paul Cooper
Mrs. Nancy M. Copple
Ms. Sherri M. Cornish
Dr. Misti Coronel
Mr. and Mrs. Stephen P. Corr
Dr. and Mrs. Douglas S. Cosgrove
Ms. Alexandra J. Cottrell
Ms. Elaine Coughlin
Mr. and Mrs. Patrick P. Coyne
Mr. Andrew Craig
Ms. Barbara H. Craig
Ms. Elizabeth Crawford
Lana H. Crawford Charitable Trust
Mr. Stephen C. Croasdale
Mr. and Mrs. Raymond B. Cromer
Ms. Lisa J. Cruikshank
The Cuneo Family Charitable Fund
Mr. and Mrs. Michael A. Cuneo
Dr. Virginia L. Cunningham

Miss Victoria M. Czechowski
Mr. and Mrs. Robert P. D'Agostino
Mr. Neal A. Damato
Dr. Nily R. Dan and Mr. Philip C. Nelson
Mr. and Mrs. Robert S. Danch
Mr. Edward Dancona
Mr. and Mrs. Michael D'Angelo
Ms. Margaret Darby
Ms. Rachel A. Darwin
Ms. Janet B. Davidson
Ms. Tracy J. Davidson
Mr. Dave D. Davis
Mr. and Mrs. Robert M. Dawley
DB Adfund Administrator LLC
Mr. and Mrs. Walt H. De Treux III
Ms. Marianne N. Dean
Mr. Robert R. Dee
Mr. John F. DeGirolamo, Jr.
Ms. Dorothy J. Del Bueno
Ms. Virginia Delavan
Delilah's Den of Philadelphia, Inc.
Dr. Mark E. Delowery
Dr. and Mrs. Rohit M. DeSai
Mr. and Mrs. Thomas P. Devenny
Dever Foundation
Mr. Lee Diamondstein
Mr. and Mrs. Kenneth J. Dietterich
Mr. Justin Dilks
Mr. and Mrs. Mark E. DiLuigi
Ms. Jennifer F. Dinan
Mr. Ray Diorio

Mr. John J. Diskin and Ms. Barbara M. Bates
Disney Worldwide
Mr. L. Stuart Ditzen and Ms. Denise Cowie
Mr. and Mrs. Robert W. Doms
Donate Well
Ms. Mary M. Dougherty
Ms. Diane C. Dowd
Mr. and Mrs. James F. Downey
Mr. and Mrs. Scott Dressler
Mr. Vincent Paul Duane and Ms. Heather A. Osborne
Mr. Kevin Duffy
Mr. Tom Dunne
Ms. Deb K. Duskey
Mr. and Mrs. William B. Dwinnell
Eastern Shore Land Conservancy
Mr. and Mrs. John R. Eccleston
Mr. and Mrs. Paul Egan
Mr. Timothy Egan
Mr. and Mrs. Herman P. Ehret
Mr. Malvin B. Eisenberg
Michael Eisenbud Charitable Fund
The Harrison and Linda Eiteljorg Charitable Fund
ELAP Services, LLC
Mr. and Mrs. Matthew O. Elkes
Ms. Lisa J. Ellis
Mr. John Dean and Mr. Steven Emmerich
Mr. Eric Emrich
Mr. Sol Walter Englander
Ms. Margery B. H. English





Mr. Richard G. Epstein
Ms. Karen Ericsson
Mr. and Mrs. David A. Espeseth
Estate of Barbara O'Brien
Estate of Miriam Sharp
Estate of Thelma L. Saunders
Estate of William Robert Law
The Carolyn N. and Joseph M. Evans, Jr. Fund
Maureen Breakiron-Evans and James Evans Family Fund
Mr. and Mrs. Robert K. Evans, Jr.
Ms. Erica Ezold
F A O Schwarz Family Foundation
Mr. and Mrs. Roy M. Fairman
Family Mayer Foundation Inc
Mr. Paul Farley
Mr. and Mrs. Timothy J. Farrell
Ms. Elaine Faulkner
Ms. Suzanne Faurot Barton
Ms. Diane I. Fayer
Dr. Mark Feinberg
Dr. and Mrs. Mark A. Feitelson
The Jeff and Deb Feldman Donations Fund
Dr. Gladys S. Fenichel
Mr. Wayne Feret
Ferguson Enterprises, Inc.
Ms. Geraldine M. Ferron-Brady
Ms. Winifred Fessenbecker
Mr. John W. Fessler and Ms. Mary L. Blair
Fiber-Line, Inc.
Jonathan and Catherine Fiebach Fund
The Ken and Caryl Field Fund

Ms. Betsy A. Figlear
Mr. Stephen M. Fillebrown, Jr.
Annette and Ira Fine Foundation
Mr. Michael F. Fink
Mr. Matthew Finkbeiner
Mrs. Leslie Finkel
Mr. and Mrs. Graham S. Finney
Mr. Paul E. Fischer and Mrs. Donna Lynch Fischer
Ms. Jane E. Fischetti and Mr. Russell A. Dorwart
George F. and Lina C. Fisher Foundation
Mr. Thomas Fitch
Mr. and Mrs. Thomas E. Fitzpatrick
Ms. Deborah N. Flanagan
Flanagan Family Charitable Fund
FluidEdge Consulting
Mrs. Amber L. Flynn
Ms. Donna Fogarty
Mr. and Mrs. Jeremy B. Fogel
Robin Foldesy and Jacqueline Foldesy
Mr. Brendan D. Ford
Mrs. Alma Forman
Ms. Kathleen A. Foster
Ms. Gwen A. Fountain
Fox 29 Television
Mr. and Mrs. James P. Fox
Franklin Street Giving Tree Foundation
Franklynn Investments, LLC
Mr. and Mrs. Michael A. Frantz
Ms. Elizabeth S. Frazier and Mr. B. Graeme Frazier
Mr. John Frazier
Mr. and Mrs. Jerry Frebowitz

Dr. J. Lamar Freed and
Dr. Susan M. Moyer
Mr. John F. Freiberg and
Ms. Joan Waters
Mr. Chip French
Mr. and Mrs. Harry B.
French
Ms. Ann Frye
Mr. Brian M. Gabriel
Most Reverend Joseph Galante
Dr. and Mrs. David Galinsky
Ms. Mary Gallagher
Mr. and Mrs. Guido Gallicchio
Mr. Peter C. Galloway
Gamesa Technology Corporation, Inc.
Dr. and Mrs. Arjunan Ganesh
Mr. Robert S. Gannon
Ms. Greta Garcia
Mr. and Mrs. Richard C. Gasloli
Mr. Robert J. Gastineau
Mr. Justin James Gdula
Mrs. Sydney M. Gebhardtsbauer
Gemalto, Inc.
Ms. Lisa M. Gemmill
General Air Products, Inc.
Mr. and Mrs. Laurence P. Genuardi
Germeshausen Foundation
Gerolamo, McNulty, Divis & Lewbart, Attorneys at Law
Mr. and Mrs. John P. Gerrity
Ms. Vicki L. Gershon and Mr. Ross Reider
Mr. and Mrs. David Gerson
Ms. Susan M. Getze

\$1,000 - \$2,499 (CONT.)

Mr. Richard H. Gherst
Mr. Philip J. Giangliulio
Mr. and Mrs. Edward M. Gibbons, Jr.
Ms. Margaret J. Gibbons
Mr. and Mrs. James E. Gibson
Mr. and Mrs. Peter F. Gilligan
Mr. William R. Gilligan and Ms. Julie A. Holvik
Ms. Janet Ginzberg and Mr. John P. Caskey
Mrs. Adrienne Giroux
Mr. Barry Gladstein
Mr. Michael Glatt
Mr. and Mrs. Mark H. Gleason
The Glenmede Trust Company
Mr. Albert S. Glenn
Mr. Patrick Glennon
Mr. David Glessner
Ms. Diane B. Glossman
Ms. Carol Glowacks
Mr. Gordon Gochenauer
Mr. and Mrs. Thomas Gockowski
Mr. and Mrs. David Godshall
Mr. Stephen F. Gold and Dr. Barbara Gold
The Goldberg Bassett Charitable Fund
Joyce and Allan Goldberg Charitable Fund
Mr. and Mrs. M. Norman M. Goldberger
Mr. Norman Goldberger
Goldfarb Family Fund
Mr. and Mrs. Mike Goldfinger
Goldsmith Weiss Foundation
Ms. Debra R. Goldstein

Mr. Michael Goldstein
Mr. and Mrs. William Goldstein
Goldsteins' Rosenberg's Raphael-Sack's, Inc.
Mrs. Linda Golub
Mr. and Mrs. Christopher Goodchild
Mr. and Mrs. Scott L. Goodling
Mr. Peter Goodman
Mr. David J. Kistner and Mrs. Tamra L. Goodrow
The Wendy and Gregory Gosfield Fund
Dr. Betty Gottlieb
Grace Knight & Co. LLC
Dr. Christine Grad
Mr. and Mrs. Joseph Gray
Mr. and Mrs. Matthew J. Gray
Mr. Hans B. Greenberg
Mr. and Mrs. Thomas J. Greenfield
Ms. Donna M. Gregor
Mr. Carl J. Gregorio
Mr. and Mrs. Anthony Grillo
Mr. Barry L. Grossbach and M. D. Hardy
Mr. and Mrs. David Grubb
Mr. Walter Grzyb
Mr. and Mrs. Alan B. Gubernick
Gussack-Stein Charitable Fund
Mr. and Mrs. Ken Guza
Gwynedd Square Presbyterian Church
H&L Fund
Dr. and Mrs. Perry L. Habecker
Ms. Kristi Habedanck
Peggy and Phillip Haberman Charitable Fund
Mr. David J. Hackman

Mr. David Haendler
Mr. and Mrs. Dan E. Hagan
Mr. and Mrs. John Hagerty
Mr. and Mrs. Frederick Hahn
Mr. Joshua Haims
Mr. Brian C. Hall and Ms. Celia Chen
David and Jennifer Hall Charitable Trust
The Harry and Catherine Halloran Family Foundation
Hamburg, Rubin, Mullin, Maxwell & Lupin
Kira Bennett Hamilton & Andrew B.B. Hamilton
Charitable Fund
A. Philip and Maureen M. Handel Charitable Fund
Ms. Mary J. Hankins and Ms. Ruth Anne Bryant
Mr. Thomas P. Hanna
Mr. and Mrs. James J. Hanyok
Dr. and Mrs. John A. Harman
Mr. Andrew Harmon
Ms. Heather L. Harris
Matthew D. Hartwell
Ms. Margaret Hassett
Mr. and Mrs. John R. Hathaway III
Mr. Robert W. Haver
The Haverford School
Ms. Nancy Hays
Mr. and Mrs. John Brian Copley
Ms. Kathleen Heaney
Ms. Karen L. Heart
Mr. and Mrs. Michael P. Heavener
Mr. and Mrs. David L. Heckman, Jr.
The Rick & Grace Heckman Charitable Fund
Dr. Bernhard Heiles
Ms. Susannah Henderson

Mr. and Mrs. Philip C. Herr II
Ms. Diane Herring
Mr. James Hess and Mrs. Laurie Hess
Mr. and Mrs. Joseph J. Hess
Mr. Charles E. Hessel
Mr. Thomas R. Hickey and Mrs. Sharon Strite Hickey
Mr. Stephen C. Hicks
Ms. Sally Hilger
Ms. Corinne B. Hill
Mr. and Mrs. David L. Hill
Mr. and Mrs. Roger S. Hillas
Mr. Rhett Hintze
Mr. and Mrs. Karl Hirt
Mr. John F. Hochschwender
Ms. Margaret A. Hodges Spader
Ms. Pamela Hoelsken
Mr. and Mrs. Gary Lee Hoffman
Mr. and Mrs. Jeffrey T. Hoffman
Mr. Jonathan R. Hoffman
Mr. Robert A. Hoffman and Ms. Elizabeth A. Renaud
Mr. David F. Hoffmann
Mr. and Mrs. Larre E. Hoke
The Michele Holcomb Charitable Fund
Linda and Michael Holden Charitable Fund
Mr. and Mrs. Edmund C. Holden
Florence & Gordan Holland Family Foundation
Ms. Christine Hollister
Mr. and Mrs. David P. Holveck
Honeywell, Inc.
Mr. and Mrs. Roger W. Hontz
Mr. Charles W. Horn III

Horsham Monthly Meeting of Friends
Mr. and Mrs. Nathan R. Howe
Douglas and Brenda Howell Charitable Fund
Mr. William A. Huber and Ms. Edith D. Hasbrouck
Mr. and Mrs. John Hufnagel
Mr. Jim Hughes
Ms. Rosemary C. Hughes
Mr. and Mrs. Robert J. Hunter
Mr. Gary A. Huntington
Mr. and Mrs. Steven Huntzinger
Mr. Syed Hussain
James and Joan Husted Charitable Fund
Ms. Lisa Hutjer
Mr. John L. Hynes and Ms. Jennie Skerl
Mr. Jennifer Ibrahim
iHeart Media Management Services, Inc.
Indy Hall
Innovative Development, LLC
Isenberg Family Foundation
Mr. Donald Jackson
Ms. Skylar Jackson
Dr. Athole G. Jacobi
Mr. and Mrs. James P. Jameison
Ms. Dixieanne James
Janney Montgomery Scott, LLC - Philadelphia
Ms. Kathryn Janofsky
Mr. Eric L. M. Jensen and Mrs. Julie M. Nishimura-Jensen
Mr. and Mrs. Wayne A. Jerdan
Jerry Lee Radio, LLC dba WBEB-FM
Ms. Lorraine A. Jewett
Jewish Federation of Greater Philadelphia

Jewish Federation of Sarasota Manatee
Ms. and Mr. Andrea Johnson
Mr. and Mrs. Craig Johnson
Mr. and Mrs. Douglas M. Johnson
Ms. Kate Johnson
Ms. Rose L. Johnson
Dr. Lisa Johnson-Pratt
Mr. and Mrs. James B. Johnston
Mr. and Mrs. Mark T. Jones
Mr. Morgan Jones
Ms. Zaira E. Jones
Joseph P Riley & Sons Moving Company, Inc.
Alaknanda Joshi
Mr. Sunghwan Joung and Ms. J. Mia Kim
Mr. and Mrs. Henry K. Justi
Mr. and Mrs. Charles Kahn, Jr.
Mr. and Mrs. Robert S. Kahn
Mr. and Mrs. Aaron I. Kait
Mr. George F. Kalf
Mr. Kevin Kan
The Kannerstein/Lanoix Charitable Fund
Dr. and Mrs. Jerry M. Kaplan
Mr. Robert Kaplan
Kaplan/Markowitz Family Charitable Fund
Kappa Epsilon Psi Military Sorority ETA Chapter
Ms. Susan G. Karchmer
Karen Schran and Stephen Gross Charitable Fund
Mr. Nicholas T. Katra and Mr. Henry M. Katra
Mrs. Linda Katz
Dr. Robert L. Kaufman and Ms. Lauren J. Krivo

\$1,000 - \$2,499 (CONT.)

Mr. and Mrs. Thomas C. Kearney
Mr. and Mrs. Joseph G. Keefer
Mr. Brian D. Keith and Ms. M. Celeste Simon
Mr. and Mrs. Andrew Kelleher
Mr. Dennis M. Kelleher
Keller William Realty
Mr. and Mrs. Kevin J. Kelly
Mrs. Patricia D. Kelly
Mrs. Marie A. Kelly
Mr. and Mrs. Steve T. Kennedy
Mr. James W. Kent
Mr. Thomas Kern
Mr. and Mrs. Thomas R. Keyer
Miss Nasreen Khan
Ms. Elizabeth S. Kimmel
Mr. and Mrs. Gary King
Kingsbury Family Fund
Mr. and Mrs. Steven T. Kinniry
Mr. and Mrs. J. Ellwood Kirk
Dr. and Mrs. Eugene J. Klifto
Ms. Grace P. Knight
Mr. Evan G. Dick and Ms. Sandra L. Knoll
Dr. Melvin A. Kohn
Mr. Gary A. Koretzky and\ Ms. Kim J. Overby
Mr. Stephen H. Korzeniowski and Dr. Deborah Brzezinski
Dr. and Mrs. Peter R. Kowey
Mr. and Mrs. Norman M. Kranzdorf
Ms. Susan M. Krauss
Mr. and Mrs. Edward D. Kraynak, Jr.

Mrs. Paula M. Krosky
Mr. Mike Krueger
Mr. and Mrs. Robert A. Kuehl
Ms. Jennifer Kugler
Mr. and Mrs. Michael J. Kukla
Mr. Gerald M. Kunico and Ms. Tracy Yeomans
Dr. Richard L. Kunis
Ms. Ann K. Kupinski
Mr. Thomas H. Kurkjian and Ms. Sandra J. Schaal
Mr. Alan M Kurz & Ms. Karen Lindsay
KYW Newsradio
KYW-TV
Mr. Michael D. Lamberjack
Nancy Lanham Gift Fund
Ms. Joann Lanzetta
Mr. and Mrs. David J. Larsson
Mr. and Mrs. John A. Lauricella
Mr. Fredrick J. Lavalley and Mr. John Whitenight
Mr. Scott Law
Ms. Amy Lawton
Mrs. Jessica Leacy
Mr. and Mrs. Edward M. Leckner
Mr. Dennis Lee and Ms. Esther K. Chueng
Mr. and Mrs. Wynn E. Lee
Ms. Kirstin H. Lees
Ms. Priscilla G. Lee-Walters
Mr. and Mrs. Robert C. Legnini
Mr. Francis J. Leithead
Mr. and Mrs. Robert H. Lemke, III
James G. Levin, Esq.
Mr. and Mrs. Robert G. Levin

Mrs. Beverly Levy
Hans And Dolores Levy Charitable Foundation
Mr. and Mrs. L. Clifford Lewis, III
Dr. Stephen B. Lichtenstein and Dr. Peggy L. Abrams
Mr. and Mrs. Harry A. Lieberman
LifeBrands, Inc
The Lighting Practice
Mr. Robert Lightman
The Carl M. Lindberg Family Foundation, Inc.
Dr. Adele Lindenmeyr
Line Lexington Management Corp.
Mr. and Mrs. Daniel R. Lipinski
Mr. Howard L. Lipschutz
Mr. John Lister-James
Ms. Patricia Littley
Ms. Hulda Loewen Classen
Ms. Ann T. Loftus and Ms. Eileen M. Talone
Mr. and Mrs. Jerome Lomurno
Marinus Los
Ms. Marlene S. Losee
Mr. William A. Lotz
Ms. Mary G. Love and Mr. Adrian A. Castelli
Mr. and Mrs. James W. Lovett
Mr. Joseph Lucci
Mr. and Mrs. Karl Lukens
Ms. Christine M. Luning
Mr. Jason Lutz
Mr. Alain Luxembourg
Dr. Julia Lynch
Mr. James G. Lyons
Mr. and Mrs. Jim Lyons

Ms. Mary Katherine Lyons
Mr. Brian MacDonald
Mr. Brian R. MacDonald and Ms. Maxine Gowen
Ms. Mary Ann MacDonald-Thomas
Mr. and Mrs. Ian A. MacKinnon
Maggio's Famous Pizzas, Inc.
Mr. and Mrs. Gerald J. Maginnis
Ms. Eileen M. Mahoney
Dr. Norman Makous
Malfer Foundation
Ms. Victoria R. Malloy
Mr. Jacob Mandel
Dr. Robert Mandelbaum
Howard R. Maniloff, Esq.
Ms. Laura M. Manthei and Mr. Charles M. Vernet
Mr. Joseph Marchegiano
Marcum. LLP
Mr. and Mrs. Phillip Margera, Jr.
Mr. and Mrs. Richard P. Marinelli
Mr. and Mrs. Richard J. Markham
Mr. and Mrs. Brian C. Marks
The Mark's Donations Fund
Mr. Timothy P. Maroney
Marriott International Inc.
Mr. and Mrs. Anthony J. Marsala
The Marshall Family Charitable Fund
Mr. and Mrs. Christopher Marshall
Mr. Mark Marshall
Mr. Thomas F. Marshall
Ms. Karena Martin
Ms. Kathleen V. Martin

Mr. And Mrs. Timothy R. Martin
Ms. Claudia Mattei
Dr. Anthony Matteo and Dr. Denise Ranucci
Dr. William H. Matthai, Jr.
Mr. and Mrs. David C. Matthews
Mr. and Mrs. William L. Mattis
Mr. and Mrs. Robert Maul
Dr. and Mrs. Jack M. Maxwell
Mr. Robert J. Mayer
Mr. and Mrs. Bradley J. McArdle
Mr. and Mrs. Matthew McCabe
Mr. and Mrs. John R. McCarron
Mr. and Mrs. Stephen C. McCarter
Mr. and Mrs. Cornelius McCarthy
Mr. and Mrs. Thomas A. McCarthy
Ms. Marybeth McClafferty
Mr. and Mrs. David F. McComsey
Mr. and Mrs. Thomas J. McCool
Mr. Ken G. McDaniel
Mr. Lawrence McDermott
Mr. and Mrs. H. Graham McDonald
Mr. Jason McDonough
Priscilla McDougal Fund
Mr. and Mrs. Timothy McGarrity
Ms. Barbara C. McGarvey
Ms. Elizabeth McGettigan
The Peter and Linda McGonigle Fund
Mr. and Mrs. C. Dean McGowan
Mr. Francis X. McGowan
Mr. and Mrs. Thomas W. McGowan
Mr. Michael D. McGrath and Ms. Meera V. Sundaram

Mr. and Mrs. Joshua T. McGrory, Sr.
Dr. and Mrs. James F. McGuckin, Jr.
Mr. Joseph P. McGurk
MCIA For Sun Bank Center
Mr. and Mrs. David McIlwain
Ms. Jami W. McKeon
Mr. and Mrs. Lawrence McLaughlin
Mr. and Mrs. Michael B. McLelland
Mr. and Mrs. Mike McMahon
Mr. and Mrs. Michael A. McVeigh
Mrs. Marijane T. Meckling
Medergy Scientific Inc.
Media Star Promotions
Meeco, Inc. / Tiger Optics, LC
Meher Mistry Donor Fund
Mr. Thomas P. Melcher
Ms. Andrea Melia
Ms. Karen A. Melikian
Mr. Mark Mendenhall
Mendicino Charitable Giving Fund
The Mennonite Foundation, Inc.
Mercantile Beneficial Association
Ms. Talia Schiff
Mr. and Mrs. Michael Mercurio
Mr. Laurence Merlis and Ms. Ryder Wood
Ms. Andrea Merrick and Mr. Alan Gressiu
Dr. and Mrs. James S. Meyer
Ms. Laura A. Michener
Mr. Craig W. Mikus
Ms. Sharon A. Miller and Mr. David S. Kaufmann

\$1,000 - \$2,499 (CONT.)

Mr. and Mrs. Christopher R. Mills
Mirowski Family Foundation
Mr. Steven Misbin and Dr. Barbara J. Howe-Misbin
Leo Model Foundation, Inc.
Mr. John Monaghan
Ms. Ellen Monahan
Ms. Nancy Monahan
Ms. Carolyn C. Monson
Mr. William Montague
Mr. and Mrs. David P. Montgomery
Moorestown Township Board of Education
Mr. and Mrs. Michael J. Moran
Mr. John P. Moran
The Morel Family Foundation
The Dennis and Susanna Morikawa Charitable Fund
Morris Charitable Trust
Mr. and Mrs. Thomas F. Motamed
Ms. Melissa H. Motz
Ms. Laurie D. Muldoon
Mr. and Mrs. James F. Muldowney
Mr. James J. Mulherin
Mulholland and Company, LLC
Mr. and Mrs. J. Edmund Mullin
Mr. and Mrs. John Mulvihill
Ms. Sheila A. Murphey
Murphy Charitable Foundation, Inc.
Mr. and Mrs. Edward Murphy
The Murphy Rhubottom Charity Fund
Murray Devine & Company, Inc.
Mr. Gerard Murray and Ms. Colleen Guiney

Music for Food
Mr. and Mrs. Suneel Nagda
Dr. Shamim Naghdi
Dr. and Mrs. Arthur J. Nannos
Mr. and Mrs. Robert W. Nappen
Mr. Jason Natale
Levon and Claudia Nazarian Family Foundation, Inc.
NBC Universal Media, LLC
Mr. Chris Nelligan
Mr. Matthew F. Nessel
New Age Industries, Inc.
Mrs. Iris B. Newman
Mr. David Newmann and Ms. Laura J. Ward
Ms. Lien Ngoc Do and Hue Trinh
Mr. and Mrs. Michael Nicholson
Mrs. Isabelle Noblanc
Ms. Joanne Nodecker
Mr. and Mrs. Joseph F. Nolan
Mr. and Mrs. Stephen C. Norman
Mr. and Mrs. Robert S. Northington
Ms. Mary K. Norwood
Ms. Shirley K. Novo
Mr. and Mrs. Stephen R. Oates
Mr. Earl R. Oberholtzer, Jr.
Mr. and Mrs. Robert O'Fee
Mr. Alan Robert Offermann and Ms. Marieanne DeRatto
Oink and Moo BBQ
Mr. and Mrs. Edward A. Oleynick
Oliver Fire Protection and Security
Mr. and Mrs. William L. Oliver
Mr. and Mrs. Daniel Olley

Mr. and Mrs. Seth R. Oltman
The Edward and Helen Oppenheimer Foundation
Mr. Edmund J. Orcutt
Ms. Jennifer Orosco
Mr. Michael J. Orwat and Mrs. Mary K. Vanatten
Ms. Margaret R. Otte
Mr. and Mrs. David L. Ottow
Dr. Joseph M. Owens
The Oxholm Family Fund
Mr. Ronald C. Pacana
Mr. Patrick Padden
Mr. and Mrs. James Palic
Mr. Brad Palmer
Mrs. Priscilla Palmer
Dr. and Mrs. Howard B. Panitch
Mr. and Mrs. Andrew A. Papamarcos
Mr. Dimitri Pappas
Mr. and Mrs. Christopher M. Pappo
Ms. Dee Parker
Mr. and Mrs. Curt Parnes
Mr. Michael S. Parr and Ms. Robin A. Streeter
Mr. and Mrs. Barton Pasternak
Mr. and Mrs. Frank Pasqualone
Mr. and Mrs. Arthur P. Pasquarella
Ms. Catherine M. Paster
Mr. and Mrs. Scott D. Patterson
Mr. and Mrs. Ted A. Patterson
Ms. Kelly W. Pearson
Mr. and Mrs. Donald D. Peck
PEI-Genesis, Inc.
Penn Power Group

Mr. Raymond Pennant
Pennsylvania Professional Soccer LLC
Pennsylvania State Education Association
Ms. Irma E. Peoples
Dr. Joel Perloff
Ms. Patricia Perosio and Mr. John E. Benci
Mr. Stephen Perry
Mr. and Mrs. James C. Peters
Mr. and Mrs. Roland Petit
Mr. and Mrs. Mark A. Petrich
Mr. and Mrs. Michael J. Petry
Mr. and Mrs. John Pettinelli
Mr. and Mrs. Neil J. Petusky
Ms. Roberta S. Petusky
Ms. Kristyn K. Phelps
Mr. Nicholas B. Phelps
The Philadelphia Media Network
Ms. Joyce Phillips
Mr. Chris Shaw and Ms. Julie D. Phillips
Ms. Willa B. Phyll
Ms. Sarah Pierce and Mr. Faiz Ahmad
Ms. Susan Pierce
Mr. and Mrs. William H. Pierce
Mr. and Mrs. Michael L. Pillion
Mr. Albert G. Pine
Dr. Jeffrey D. Pinto
Mr. Scott Piskun
Mr. and Mrs. Robert S. Pittman
PKF-Mark III, Inc.
Ms. Erica Plotegher and Mr. Luigi Xerri
Dr. and Mrs. Stanley A. Plotkin

Mr. and Mrs. Joseph Pluck
Ms. Valerie E. Plummer
Elin and David Poneman Fund
Mr. and Mrs. Gerald J. Porter
Dr. Roy A. Powell
Ms. Sangeeta Prasad
Ms. Marissa Price
Progressive Packaging, Inc.
Marion Prochazka Charitable Trust
Mr. Robert J. Proske
Mr. and Mrs. A. Paul Protos
Mr. William Proud
Prudential Fox & Roach Realtors
Paul P. Pruss & Son, Inc.
Mr. Michael A. Puche
Mr. Eric L. Pumroy
Mrs. Earl S. Punchard
Mr. Robert L. Purnell
Mrs. Elizabeth Quarles
Mr. and Mrs. Edwin Quinn
Mr. and Mrs. John F. Quinn
Mr. Eric M. Rahe
Raikin Family Charitable Fund
Dr. Rey Ramirez and Dr. Corinna Franklin
Mr. and Mrs. Sadhana A. Rao
Mr. Paul A. Rardin
Mr. Arturo Raschbaum
Ms. Carol A. Raviola
Mr. Laurence A. Reardon
Ms. JoAnn Reddick
Mr. and Mrs. Charles Reed, Jr.

Mr. and Mrs. Robert M. Reese
Renaissance Academy
Mr. Henry J. Repsher
Resurrection Lutheran Church
Mrs. Carol A. Reuter
Mr. and Mrs. Jon Michael Richter
Mr. and Mrs. Walter A. Rickett
Mr. David B. Ripsom
Ms. Julia Rix
Mr. David Mark Riz and Chao-Chi Lin
Dr. Thomas A. Rizzo, Jr.
Ms. Cathleen H. Roach
Mr. and Mrs. Richard L. Robertson
Mr. Homer Robinson
Mr. Patrick A. Robinson and Mrs. Francine A. Robinson
Rockwall, Inc.
Roddy, Inc.
Mr. and Mrs. Fred Roe
Mrs. Anne L. Rogers
Ms. Crystal Rolles
The Rollins Family Charitable Trust
Geoff Roman Charitable Fund
Mr. James Ronca
The Rorer Foundation
Ms. Allison M. Ros
Ms. Wendy J. Rose and Mr. Dennis Green
Ms. Hope Rosenlund
Mrs. Linda E. Rosenthal
Rosin Charitable Fund
Mr. and Mrs. Ralph L. Rosnow

\$1,000 - \$2,499 (CONT.)

Ms. Ruth J. Rosoff
Mr. Jeffrey J. Ross
Mrs. Lyn M. Ross
Ms. Mary Ann Rossi and Mr. Jeffrey P. Lewis
Ms. Elaine C. Rothbauer
Ms. Dianne Rothenberger
Mr. and Mrs. Donovan E. Roush
Ms. Eleanor Rowan
Ms. Marta K. Rozans
Mr. David Rubin
Ms. Helene B. Rubin
Rudolph Family Charitable Fund
Ms. Judith Q. Ruse
Mr. William F. Ryan
Mr. and Mrs. Mitchell Sadar
Sadwin Charitable Gift Fund
Safeguard Business Systems
The Sand Family Fund
Dr. Wudbhuv Sankar
The Sarnowski Novak Fund
Mr. Robert Sasson
Mr. and Mrs. Cameron Saunders
Mrs. Laura A. Sawhill
Mr. and Mrs. Richard D. Schaaf
Mr. and Mrs. John Schaefer
Mr. and Mrs. Dennis R. Schaeffer
Ms. Barbara W. Schaff
Mr. Robert Schaffer
Ms. Jennifer M. Schauble
Mr. Richard L. Scheff

Mr. and Mrs. Justin Schellenger
Dr. William R. Schetman and Dr. Anna Schetman
Mr. and Mrs. Gary J. Schiff
Dr. Robert F. Schiowitz and Dr. Ronit Sugar
Mr. George A. Schmidt
Ms. Karen Schoelles
Schoenberg Family Fund
Dr. Daniel Schwartz
Mr. Mark S. Schwartz
Mr. and Mrs. Eric T. Schwarz
Mr. and Mrs. Darby Scott
Ruth and Earl Scott Charitable Trust
Ms. Danielle F. Scott
Ms. Martha Scott Walton
Scully Welding Supply Corporation
The Second Baptist Church of Germantown
SEER Interactive
SEI Giving Fund
The Peter and Karla Senescu Fund
Mr. Velavan Senthil
Susan M. Sersha Charitable Account
Mr. and Mrs. Andrew H. Shaer
Mr. and Mrs. Jesse R. Shafer
Dr. Gene Shaffer
Dr. Irving M. Shapiro
Mr. Donald A. Shaw
Mr. and Mrs. James B. Shaw
Dr. Judith Shekmar
Mr. Scott Shepard
Mr. and Mrs. Peter M. Sherman
Mr. and Mrs. Bruce J. Shook

Dr. Aseem R. Shukla
Mr. Richard Shute
Mr. Richard A. Sieckman
Mr. and Mrs. Kalyan Sikdar
Mr. Barry Silver
Selma & Alvin Silverman
Foundation, Inc.
Mr. Mike Simard
Mr. and Mrs. Joseph T. Singer
Mr. David Skoog and Dr. Victoria Nevius Skoog
Dr. Dorothy A. Slavin
Smedley & Lis
Mr. and Mrs. George R. Smith
Ms. Maria Smith
Snave Foundation
Mr. and Mrs. Ivan R. Snyder
Mr. Thomas P. Sontag
Mr. Enrico R. Sorrentino
Mr. Michael Soskis
Southern Glazer's Wine and Spirits Charitable Fund
Joan & Bernard Spain Foundation Trust
Howard Spodek Gift Fund
Mr. Todd Sprinkle
Mr. Michael St John
St. Andrew's Evangelical Lutheran Church
St. Thomas of Villanova Parish
Mr. and Mrs. Arthur P. Staddon
Mr. Robert J. Stadnicki
Staples Foundation for Learning, Inc.
Mr. William J. Starkey
Ms. Antoinette N. Starr
Mr. and Mrs. Daniel Staud



Mr. James G. Steiker and Ms. Wendy R. Epstein
The Steinhart Family Trust
Mr. Saul Sternberg
Mr. and Mrs. Timothy S. Sterrett
Mr. and Mrs. Leonard Stevens
Mrs. Gwynneth S. Stewart
Mr. and Mrs. Curtis Stillman
Mr. and Mrs. Michael A. Stolper
Stoneridge PMG Advisors, LLC
Mr. Bryan Storm
Mr. and Mrs. Seymour Stotland
Mr. and Mrs. William J. Strahan
Stuart Kahn Associates, LLC
Studio Movie Grill
Suburban Philadelphia Abstract, Inc.
Suburban West Realtors Association
Ms. Catherine A. Sulimay
Dr. Francis J. Sullivan, Jr.
Mr. and Mrs. John C. Sullivan
Mr. Patrick J. Sullivan
Mr. Scott Sullivan
Ms. Dawn Sunday
Supplee Memorial Presbyterian Church
Mr. and Mrs. John Surry
Mr. and Mrs. Warren H. Suss
Dr. Robert W. Sweetman
Mr. Jon M. Sweigart
Ms. Joyce Swoyer
Samuel Tabas Family Foundation
Mr. and Mrs. Walter J. Taggart
Dr. and Mrs. Ulrich F. Taglieber

Tague Lumber
TAH Fund
Dr. and Mrs. Ricky Takai
Ms. Bryn Tamarkin
Ms. Ruth J. Tanaiewski
Mr. and Mrs. Greg W. Tanner
Mr. and Mrs. Stephen M. Taran
Target Corporation
Ms. Margaret Tauscher
David V. N. Taylor Foundation
Mr. Stuart Taylor
Tech Clarity Inc.
Ms. Annita L. Tedesco
Ms. Kimberley G. Tempas
Tenet Healthcare Corp.
Ms. Kara J. Tennis
Mr. Frank Terpolili
The Rodin Family Charitable Fund
Ms. Isobel Thompson
Mr. Mitchell L. Thompson
Mr. Boyd Tinsley
Mr. Brian J. Titus
Dr. and Mrs. Lawrence W. C. Tom
Mr. Stephen A. Townsend
Mr. Dennis Trainer
Ms. Lynette S. Treible
Mr. Alan Tripp
Triskeles Foundation
Mr. Simon J. Trowell
Trumark Financial Credit Union
Mr. and Mrs. Thomas D. Tryon

Ms. Elizabeth Turek
Mr. and Mrs. Gary O. Turndorf
Mr. and Mrs. Steven J. Udicious
Mr. Ronald Ulm
United Way of Allegheny
United Way of the Capital Region
University of Pennsylvania-PennDesign Student Council
Dr. Akhil Vaidya
Valley Forge Tourism & Convention Board
Vegari Foundation
Ms. Marguerite Veil
Richard and Johnette Venne Foundation
Mr. and Mrs. Ricardo Verges
Veritas Medical Solutions, LLC
Ms. Sara Vernon Sterman
Mr. and Mrs. James W. Vershinski
Ms. Patricia Vicino
Udayan and Sheela Vinod Foundation
Mr. David Vondercrone
Mr. Samuel Vrooman
Mr. Russell E. Wagner
Mr. Alexander P. Walder
Mr. and Mrs. Richard J. Waldis, Jr.
Mr. and Mrs. Walter J. Waldspurger
Ms. B. August Walker
Dr. David Walker
Mr. and Mrs. Drew Wallace
Wallace Roberts & Todd
Mr. Brian J. Walling
Walmart Store #2096

\$1,000 - \$2,499 (CONT.)

Walmart Store #2445
Walmart Store #5131
Walmart Store #5649
Mr. John Walson and Ms. Michal Moffa Walson
Walter Williams Foundation
Walters and Mason Retail, Inc
Mr. James M. Warren
Mr. and Mrs. Gregory M. Warshaw
Mr. and Mrs. David N. Watson
Mr. Richard J. Watson
Ms. Wendy Watson
Mr. Thomas Waugh
Mr. and Mrs. Kirke D. Weaver
Ms. Constance R. Webber
Weber Display & Packaging Company, Inc.
Mr. and Mrs. Timothy J. Weber
Mr. and Mrs. Matthew Weidner
Mr. and Mrs. Frederick T. Weis, Jr.
Mr. Jonathan Weitzman
Mr. and Mrs. H. Ray Welch, Jr.
Wells Fargo
Wellspring Physician Acupuncture
Ms. Betsy L. Wendel
Ms. Rachel Wener
Mr. and Mrs. T. H. Wentz
Richard W. Wetherill Foundation
Mr. and Mrs. Sean Whalen
Wharton Hill Investment Advisors
Mr. Scott J. Wheeler
Mr. Russell J. Whiteman and Ms. Gretchen Berry

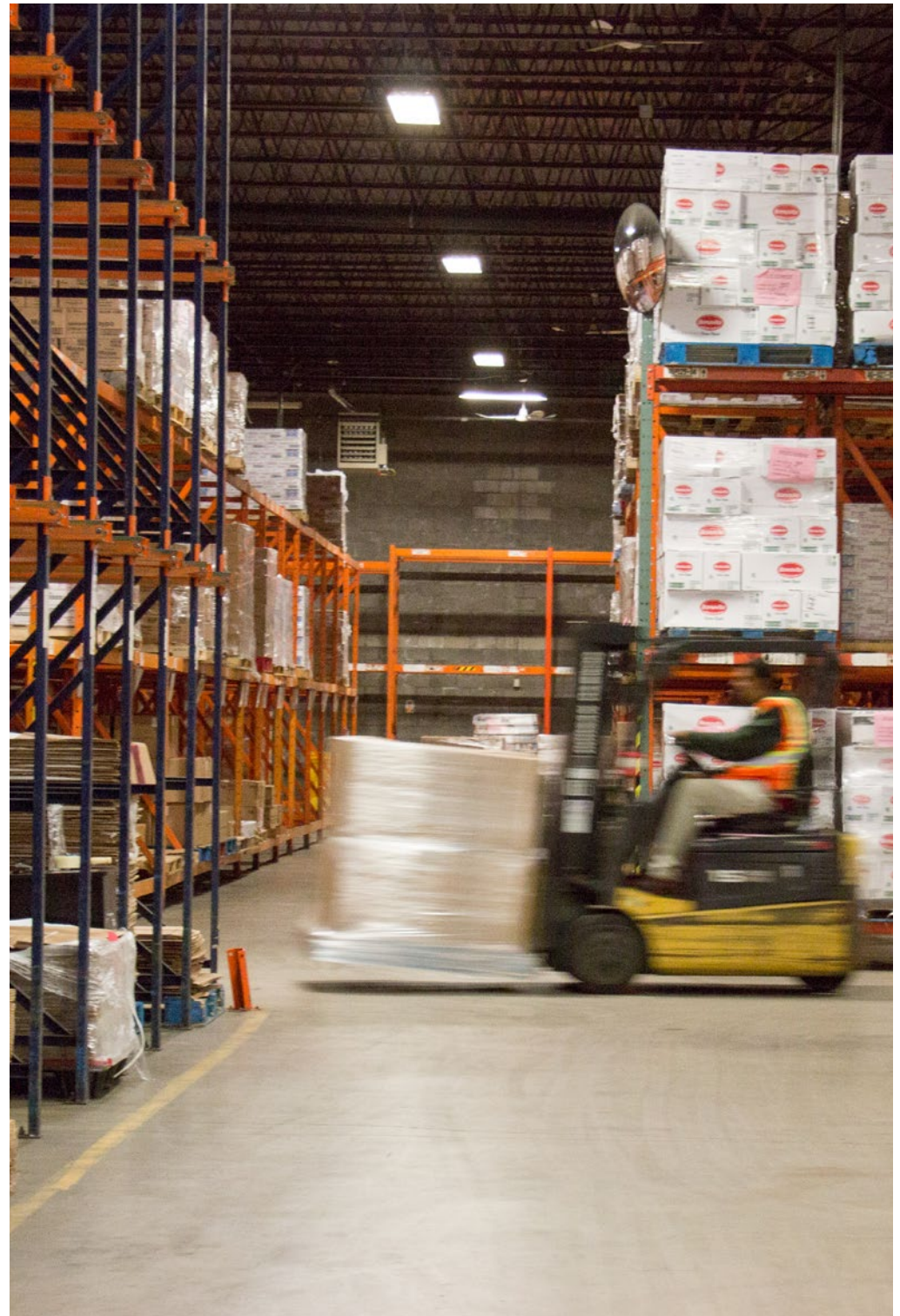
Dr. Richard Whittington and Dr. Jane L. Coleman
WHYY, Inc.
Mr. and Mrs. Gregory J. Wiber
Mr. Steven J. Wieland and Ms. Susan E. Barr
Ms. Matla Wiener
Mr. and Mrs. Thomas G. Wiercinski
Mr. and Mrs. David W. Wilkie
Mr. Ben Wilkins
Mrs. Valerie Wilkins
Ms. Marjean Willett
Mr. Douglas H. Williams
Mr. Phil Williams
Reverend Richard C. Williams
Mr. Richard N. Williams III
Wishlist Foundation
Mr. Daniel E. Witmer
Mr. Arnold Witte
Mr. and Mrs. Eric Wlodkowski
Wolf Family Fund
Mr. and Mrs. J. E. Wolfington III
Mr. and Mrs. Norman Wolgin
F.P. Woll and Company
Mr. David Wong
Dr. Linda Y. Wong
Mr. Michael Wong
Woodforest Charitable Foundation
Mr. and Mrs. Lee P. Woodward
Mr. Geoffrey L. Woolery
WPHL-TV, Inc.
Ms. Kathleen Wright
Mr. and Mrs. William G. Wurster

Ms. Emily M. Wylie
Mr. and Mrs. James A. Wylie
Mr. Max R. Yaffe and Dr. Joan C. Amatniek
Mr. Michael Yampolsky
Ms. Tammy Yan
Mr. and Mrs. Jon Yardney
Sharon and Harold Yoh
The Young Family Charitable Fund
Ms. Pamela Young
Mr. Patrick Young
Mr. Theodore Young
Mr. and Mrs. Ruey Yu
Ms. Linda R. Yuill and Mr. David L. Mummah
Mr. and Mrs. Joseph E. Zack
Mr. and Mrs. Charles J. Zacney
Mr. and Mrs. John F. Zeis
Ms. Beth A. Zelasky
Mr. G. Richard Zeller
Mr. and Mrs. Thomas E. Zemaitis
Dr. Allison M. Zibelli
Mr. Robert Zimring
Mr. and Mrs. Robert J. Zucosky

Thank You

FOR HELPING
DRIVE HUNGER FROM
OUR COMMUNITIES

40,000+ individual donors
helped feed 90,000 neighbors
a week



Thank You

for helping drive hunger
from our communities!



\$1 = 2 meals

DONATE TODAY

at [Philabundance.org](https://philabundance.org)

PHILABUNDANCE

3616 S. Galloway Street • Philadelphia, PA 19148 • 215-339-0900